

Product datasheet for **TA341626**

HELB Rabbit Polyclonal Antibody

Product data:

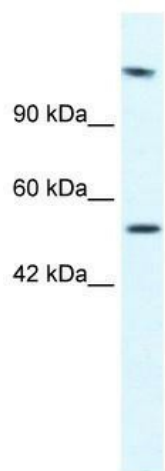
Product Type:	Primary Antibodies
Applications:	WB
Recommended Dilution:	WB
Reactivity:	Human
Host:	Rabbit
Isotype:	IgG
Clonality:	Polyclonal
Immunogen:	The immunogen for anti-HELB antibody: synthetic peptide directed towards the N terminal of human HELB. Synthetic peptide located within the following region: FGRFPITGAWWRVKVQVKPVVGSRSYQYQVQGFPYSYFLQSDMSPPNQKHI
Formulation:	Liquid. Purified antibody supplied in 1x PBS buffer with 0.09% (w/v) sodium azide and 2% sucrose. <i>Note that this product is shipped as lyophilized powder to China customers.</i>
Concentration:	lot specific
Conjugation:	Unconjugated
Storage:	Store at -20°C as received.
Stability:	Stable for 12 months from date of receipt.
Predicted Protein Size:	120 kDa
Gene Name:	helicase (DNA) B
Database Link:	NP_387467 Entrez Gene 92797 Human Q8NG08
Background:	This gene encodes a DNA-dependent ATPase which catalyzes the unwinding of DNA necessary for DNA replication, repair, recombination, and transcription. This gene is thought to function specifically during the S phase entry of the cell cycle. [provided by RefSeq, Mar 2012]
Synonyms:	DHB; hDHB



[View online »](#)

Note: Immunogen Sequence Homology: Human: 100%; Pig: 86%; Rat: 86%; Bovine: 86%; Guinea pig: 79%

Product images:



WB Suggested Anti-HELB Antibody Titration: 2.5 ug/ml; ELISA Titer: 1:62500; Positive Control: Jurkat cell lysate