

Product datasheet for **TA341618**

MDA5 (IFIH1) Rabbit Polyclonal Antibody

Product data:

Product Type:	Primary Antibodies
Applications:	IHC, WB
Recommended Dilution:	WB, IHC
Reactivity:	Human
Host:	Rabbit
Isotype:	IgG
Clonality:	Polyclonal
Immunogen:	The immunogen for anti-IFIH1 antibody: synthetic peptide directed towards the middle region of human IFIH1. Synthetic peptide located within the following region: QINDTIRMIDAYTHLETIFYNEEKDKKFAVIEDDSDEGGDDEYCDGDEDED
Formulation:	Liquid. Purified antibody supplied in 1x PBS buffer with 0.09% (w/v) sodium azide and 2% sucrose. <i>Note that this product is shipped as lyophilized powder to China customers.</i>
Concentration:	lot specific
Conjugation:	Unconjugated
Storage:	Store at -20°C as received.
Stability:	Stable for 12 months from date of receipt.
Predicted Protein Size:	117 kDa
Gene Name:	interferon induced with helicase C domain 1
Database Link:	NP_071451 Entrez Gene 64135 Human Q9BYX4



[View online »](#)

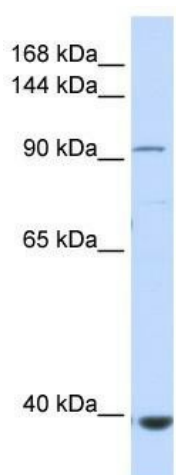
Background: DEAD box proteins, characterized by the conserved motif Asp-Glu-Ala-Asp (DEAD), are putative RNA helicases. They are implicated in a number of cellular processes involving alteration of RNA secondary structure such as translation initiation, nuclear and mitochondrial splicing, and ribosome and spliceosome assembly. Based on their distribution patterns, some members of this family are believed to be involved in embryogenesis, spermatogenesis, and cellular growth and division. This gene encodes a DEAD box protein that is upregulated in response to treatment with beta-interferon and a protein kinase C-activating compound, mezerein. Irreversible reprogramming of melanomas can be achieved by treatment with both these agents; treatment with either agent alone only achieves reversible differentiation. Genetic variation in this gene is associated with diabetes mellitus insulin-dependent type 19. [provided by RefSeq, Jul 2012]

Synonyms: AGS7; Hlcd; IDDM19; MDA-5; MDA5; RLR-2

Note: Immunogen Sequence Homology: Human: 100%; Horse: 85%; Bovine: 85%; Rat: 82%; Pig: 77%; Mouse: 77%

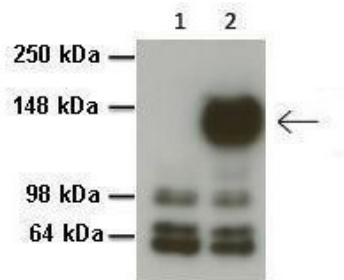
Protein Pathways: RIG-I-like receptor signaling pathway

Product images:

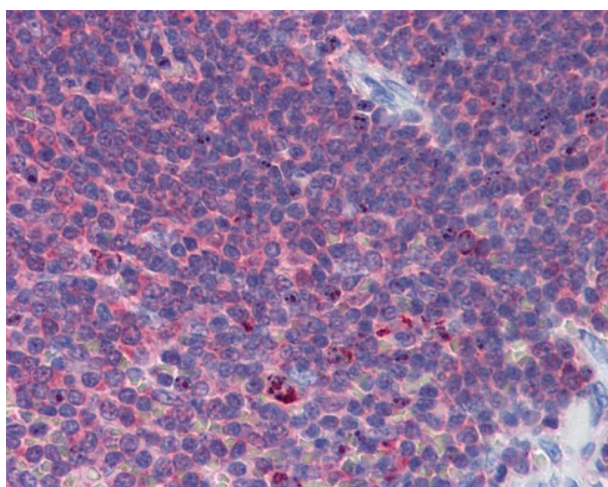


WB Suggested Anti-IFIH1 Antibody Titration: 0.2-1 ug/ml; ELISA Titer: 1:62500; Positive Control: Human Muscle

IFIH1



Lanes: ; 1: 20ug HEK293T no transfection, 2: 20ug HEK293T 3Flag-MDA5/IFIH1; Primary Antibody Dilution: ; 1:1000; Secondary Antibody: ; Anti-rabbit HRP; Secondary Antibody Dilution: ; 1:1000; Gene Name: ; IFIH1; Submitted by: ; Dr. Safia Deddouche, London



IHC Information: Paraffin embedded spleen tissue, tested with an antibody Dilution of 5 ug/ml.