

## Product datasheet for **TA341617**

### **DHX35 Rabbit Polyclonal Antibody**

#### **Product data:**

Product Type:	Primary Antibodies
Applications:	WB
Recommended Dilution:	WB
Reactivity:	Human
Host:	Rabbit
Isotype:	IgG
Clonality:	Polyclonal
Immunogen:	The immunogen for anti-DHX35 antibody: synthetic peptide directed towards the N terminal of human DHX35. Synthetic peptide located within the following region: MAAPVGPVKFWRPGTEGPGVSISEERQSLAENSGTTVVYNPYAALSIEQQ
Formulation:	Liquid. Purified antibody supplied in 1x PBS buffer with 0.09% (w/v) sodium azide and 2% sucrose.
Concentration:	lot specific
Conjugation:	Unconjugated
Storage:	Store at -20°C as received.
Stability:	Stable for 12 months from date of receipt.
Predicted Protein Size:	79 kDa
Gene Name:	DEAH-box helicase 35
Database Link:	<a href="#">NP_068750</a> <a href="#">Entrez Gene 60625 Human</a> <a href="#">Q9H5Z1</a>



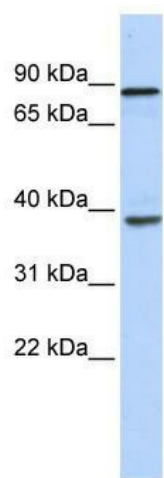
[View online »](#)

**Background:** DEAD box proteins characterized by the conserved motif Asp-Glu-Ala-Asp (DEAD), are putative RNA helicases. They are implicated in a number of cellular processes involving alteration of RNA secondary structure such as translation initiation, nuclear and mitochondrial splicing, and ribosome and spliceosome assembly. Based on their distribution patterns, some members of the DEAD box protein family are believed to be involved in embryogenesis, spermatogenesis, and cellular growth and division. The function of this gene product which is a member of this family, has not been determined. Alternatively spliced transcript variants have been found for this gene. [provided by RefSeq, Jun 2010]

**Synonyms:** C20orf15; DDX35; KAIA0875

**Note:** Immunogen Sequence Homology: Dog: 100%; Pig: 100%; Rat: 100%; Horse: 100%; Human: 100%; Mouse: 100%; Bovine: 100%; Rabbit: 100%; Guinea pig: 92%

### Product images:



WB Suggested Anti-DHX35 Antibody Titration:  
0.2-1 ug/ml; ELISA Titer: 1:312500; Positive  
Control: Human heart