

Product datasheet for **TA341614**

MOV10 Rabbit Polyclonal Antibody

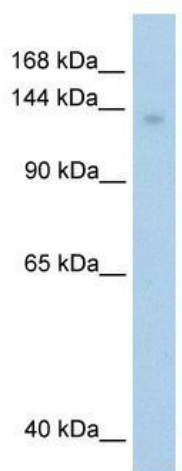
Product data:

Product Type:	Primary Antibodies
Applications:	IHC, WB
Recommended Dilution:	WB, IHC
Reactivity:	Human
Host:	Rabbit
Isotype:	IgG
Clonality:	Polyclonal
Immunogen:	The immunogen for anti-MOV10 antibody: synthetic peptide directed towards the C terminal of human MOV10. Synthetic peptide located within the following region: AKLDLQQGQNLQGLSKLSPSTSGPHSHDYLPQEREGEGGLSLQVEPEWR
Formulation:	Liquid. Purified antibody supplied in 1x PBS buffer with 0.09% (w/v) sodium azide and 2% sucrose. <i>Note that this product is shipped as lyophilized powder to China customers.</i>
Concentration:	lot specific
Conjugation:	Unconjugated
Storage:	Store at -20°C as received.
Stability:	Stable for 12 months from date of receipt.
Predicted Protein Size:	110 kDa
Gene Name:	Mov10 RISC complex RNA helicase
Database Link:	NP_066014 Entrez Gene 4343 Human Q9HCE1
Background:	MOV10 may be an helicase with an important function in development and/or control of cell proliferation.
Synonyms:	fSAP113; gb110
Note:	Immunogen Sequence Homology: Pig: 100%; Horse: 100%; Human: 100%; Bovine: 100%; Rabbit: 100%; Dog: 93%; Rat: 93%; Mouse: 93%; Guinea pig: 86%

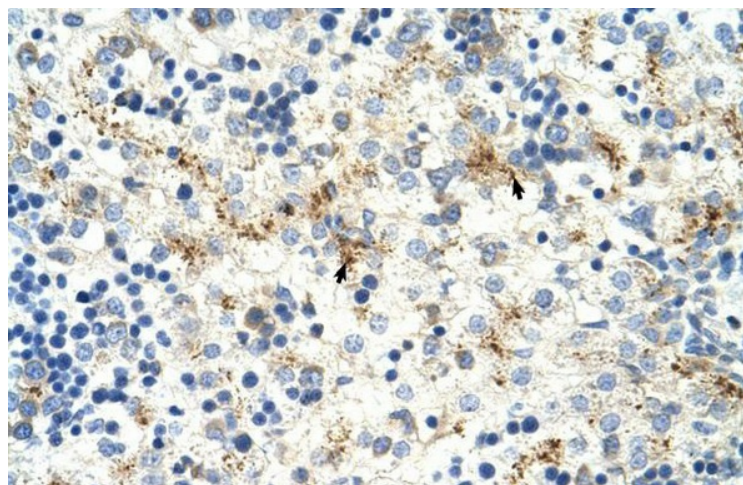


[View online »](#)

Product images:



WB Suggested Anti-MOV10 Antibody Titration:
1.25 ug/ml; ELISA Titer: 1:312500; Positive
Control: Transfected 293T



Human Intestine