

Product datasheet for **TA341612**

DDX55 Rabbit Polyclonal Antibody

Product data:

Product Type:	Primary Antibodies
Applications:	WB
Recommended Dilution:	WB
Reactivity:	Human
Host:	Rabbit
Isotype:	IgG
Clonality:	Polyclonal
Immunogen:	The immunogen for anti-DDX55 antibody: synthetic peptide directed towards the N terminal of human DDX55. Synthetic peptide located within the following region: RELAIQIDEVLSHFTKHFPEFSQILWIGGRNPGEDVERFKQQGGNIIVAT
Formulation:	Liquid. Purified antibody supplied in 1x PBS buffer with 0.09% (w/v) sodium azide and 2% sucrose.
Concentration:	lot specific
Conjugation:	Unconjugated
Storage:	Store at -20°C as received.
Stability:	Stable for 12 months from date of receipt.
Predicted Protein Size:	66 kDa
Gene Name:	DEAD-box helicase 55
Database Link:	NP_065987 Entrez Gene 57696 Human Q8NHQ9



[View online »](#)

Background:

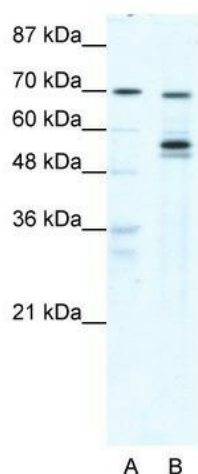
This gene encodes a member of the DEAD box protein family. DEAD box proteins, characterized by the conserved motif Asp-Glu-Ala-Asp (DEAD), are putative RNA helicases. They are implicated in a number of cellular processes involving alteration of RNA secondary structure, such as translation initiation, nuclear and mitochondrial splicing, and ribosome and spliceosome assembly. Based on their distribution patterns, some members of this family are believed to be involved in embryogenesis, spermatogenesis, and cellular growth and division. Multiple alternatively spliced transcript variants have been found for this gene, but the biological validity of only one transcript has been confirmed. [provided by RefSeq, Jul 2008]

Synonyms:

FLJ16577; KIAA1595; MGC33209

Note:

Immunogen Sequence Homology: Pig: 100%; Rat: 100%; Human: 100%; Mouse: 100%; Rabbit: 100%; Guinea pig: 100%; Horse: 93%; Bovine: 93%; Dog: 79%

Product images:


WB Suggested Anti-DDX55 Antibody Titration:
0.2-1 ug/ml; ELISA Titer: 1:312500; Positive
Control: HepG2 cell lysate