

## Product datasheet for **TA341610**

### WHIP (WRNIP1) Rabbit Polyclonal Antibody

#### Product data:

Product Type:	Primary Antibodies
Applications:	WB
Recommended Dilution:	WB
Reactivity:	Human
Host:	Rabbit
Isotype:	IgG
Clonality:	Polyclonal
Immunogen:	The immunogen for anti-WRNIP1 antibody: synthetic peptide directed towards the N terminal of human WRNIP1. Synthetic peptide located within the following region: PGAKRRRLSESSALKQPATPTAAESSEGE GEGEGDDGGGETESRESYDAPPT
Formulation:	Liquid. Purified antibody supplied in 1x PBS buffer with 0.09% (w/v) sodium azide and 2% sucrose. <i>Note that this product is shipped as lyophilized powder to China customers.</i>
Concentration:	lot specific
Conjugation:	Unconjugated
Storage:	Store at -20°C as received.
Stability:	Stable for 12 months from date of receipt.
Predicted Protein Size:	72 kDa
Gene Name:	Werner helicase interacting protein 1
Database Link:	<a href="#">NP_569079</a> <a href="#">Entrez Gene 56897 Human</a> <a href="#">Q96S55</a>



[View online »](#)

**Background:**

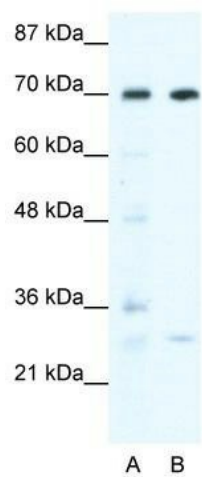
Werner's syndrome is a rare autosomal recessive disorder characterized by accelerated aging that is caused by defects in the Werner syndrome ATP-dependent helicase gene (WRN). The protein encoded by this gene interacts with the exonuclease-containing N-terminal portion of the Werner protein. This protein has a ubiquitin-binding zinc-finger domain in the N-terminus, an ATPase domain, and two leucine zipper motifs in the C-terminus. It has sequence similarity to replication factor C family proteins and is conserved from *E. coli* to human. This protein likely accumulates at sites of DNA damage by interacting with polyubiquitinated proteins and also binds to DNA polymerase delta and increases the initiation frequency of DNA polymerase delta-mediated DNA synthesis. This protein also interacts with nucleoporins at nuclear pore complexes. Two transcript variants encoding different isoforms have been isolated for this gene. [provided by RefSeq, Jul 2012]

**Synonyms:**

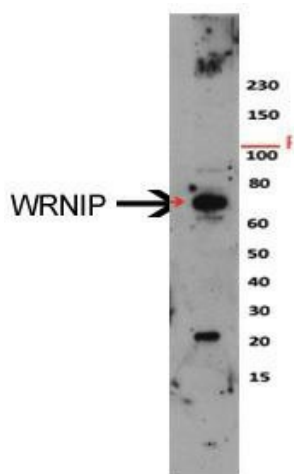
bA420G6.2; WHIP

**Note:**

Immunogen Sequence Homology: Dog: 100%; Rat: 100%; Human: 100%; Mouse: 100%; Zebrafish: 85%; Pig: 79%; Bovine: 79%; Yeast: 77%

**Product images:**

WB Suggested Anti-WRNIP1 Antibody Titration:  
0.2-1 ug/ml; ELISA Titer: 1:312500; Positive  
Control: HepG2 cell lysate



Sample Type: HeLa cell lysate Dilution: 1:1000