

Product datasheet for **TA341608**

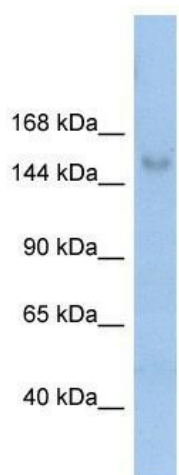
MOV10L1 Rabbit Polyclonal Antibody

Product data:

Product Type:	Primary Antibodies
Applications:	WB
Recommended Dilution:	WB
Reactivity:	Human
Host:	Rabbit
Isotype:	IgG
Clonality:	Polyclonal
Immunogen:	The immunogen for anti-MOV10L1 antibody: synthetic peptide directed towards the N terminal of human MOV10L1. Synthetic peptide located within the following region: LNVGQEVIAVVEENKVSNGLKAIRVEAVSDKWEDDSRNLHGSPSDCGPRVL
Formulation:	Liquid. Purified antibody supplied in 1x PBS buffer with 0.09% (w/v) sodium azide and 2% sucrose.
Concentration:	lot specific
Conjugation:	Unconjugated
Storage:	Store at -20°C as received.
Stability:	Stable for 12 months from date of receipt.
Predicted Protein Size:	135 kDa
Gene Name:	Mov10 RISC complex RNA helicase like 1
Database Link:	NP_061868 Entrez Gene 54456 Human Q9BXT6
Background:	This gene is similar to a mouse gene that encodes a putative RNA helicase and shows testis-specific expression. Multiple transcript variants encoding different isoforms have been found for this gene. [provided by RefSeq, Aug 2009]
Synonyms:	CHAMP; DJ402G11.8
Note:	Immunogen Sequence Homology: Rat: 100%; Horse: 100%; Human: 100%; Mouse: 100%; Bovine: 100%; Dog: 93%; Pig: 93%; Rabbit: 93%; Guinea pig: 93%


[View online »](#)

Product images:



WB Suggested Anti-MOV10L1 Antibody Titration:
0.2-1 ug/ml; ELISA Titer: 1:12500; Positive Control:
Human Small Intestine