

Product datasheet for **TA341606**

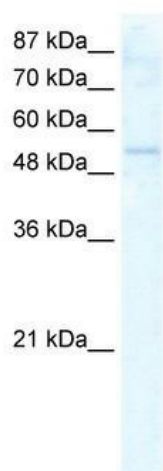
DDX19A Rabbit Polyclonal Antibody

Product data:

Product Type:	Primary Antibodies
Applications:	WB
Recommended Dilution:	WB
Reactivity:	Human
Host:	Rabbit
Isotype:	IgG
Clonality:	Polyclonal
Immunogen:	The immunogen for anti-DDX19A antibody: synthetic peptide directed towards the N terminal of human DDX19A. Synthetic peptide located within the following region: IKEEKVKADTNGIIKTSTTAEKTDEEEKEDRAAQSLNKLIRSNLVDNTN
Formulation:	Liquid. Purified antibody supplied in 1x PBS buffer with 0.09% (w/v) sodium azide and 2% sucrose.
Concentration:	lot specific
Conjugation:	Unconjugated
Storage:	Store at -20°C as received.
Stability:	Stable for 12 months from date of receipt.
Predicted Protein Size:	53 kDa
Gene Name:	DEAD-box helicase 19A
Database Link:	NP_060802 Entrez Gene 55308 Human Q9NUU7
Background:	ATP-dependent RNA helicase involved in mRNA export fromThe nucleus. Rather than unwinding RNA duplexes, DDX19 functions as a remodeler of ribonucleoprotein particles, whereby proteins bound to nuclear mRNA are dissociated and replaced by cytoplasmic mRNA binding proteins.
Synonyms:	DDX19-DDX19L; DDX19L
Note:	Immunogen Sequence Homology: Human: 100%; Rat: 93%; Mouse: 93%; Horse: 86%; Dog: 85%



[View online »](#)

Product images:

WB Suggested Anti-DDX19A Antibody Titration: 2.5 ug/ml; ELISA Titer: 1:62500; Positive Control: HepG2 cell lysate DDX19A is strongly supported by BioGPS gene expression data to be expressed in Human HepG2 cells