

Product datasheet for **TA341605**

DHX32 Rabbit Polyclonal Antibody

Product data:

Product Type:	Primary Antibodies
Applications:	WB
Recommended Dilution:	WB
Reactivity:	Human
Host:	Rabbit
Isotype:	IgG
Clonality:	Polyclonal
Immunogen:	The immunogen for anti-DHX32 antibody: synthetic peptide directed towards the N terminal of human DHX32. Synthetic peptide located within the following region: EEEGLECPNSSSEKRYFPESLDSSDGDEEEVLACEDLELNPFDPGLPYSSR
Formulation:	Liquid. Purified antibody supplied in 1x PBS buffer with 0.09% (w/v) sodium azide and 2% sucrose. <i>Note that this product is shipped as lyophilized powder to China customers.</i>
Concentration:	lot specific
Conjugation:	Unconjugated
Storage:	Store at -20°C as received.
Stability:	Stable for 12 months from date of receipt.
Predicted Protein Size:	84 kDa
Gene Name:	DEAH-box helicase 32 (putative)
Database Link:	NP_060650 Entrez Gene 55760 Human Q7L7V1



[View online »](#)

Background:

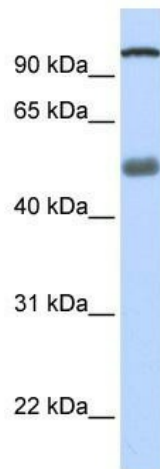
DEAD box proteins, characterized by the conserved motif Asp-Glu-Ala-Asp (DEAD), are putative RNA helicases. They are implicated in a number of cellular processes involving alteration of RNA secondary structure such as translation initiation, nuclear and mitochondrial splicing, and ribosome and spliceosome assembly. Based on their distribution patterns, some members of this DEAD box protein family are believed to be involved in embryogenesis, spermatogenesis, and cellular growth and division. This gene encodes a member of this family. The function of this member has not been determined. Alternative splicing of this gene generates 2 transcript variants, but the full length nature of one of the variants has not been defined. [provided by RefSeq, Jul 2008]

Synonyms:

DDX32; DHLP1

Note:

Immunogen Sequence Homology: Dog: 100%; Pig: 100%; Horse: 100%; Human: 100%; Bovine: 100%; Rat: 93%; Mouse: 93%; Rabbit: 93%; Guinea pig: 92%

Product images:

WB Suggested Anti-DHX32 Antibody Titration:
0.2-1 ug/ml; ELISA Titer: 1:62500; Positive Control:
Human Lung