

## Product datasheet for **TA341604**

### SMARCA6 (HELLS) Rabbit Polyclonal Antibody

#### Product data:

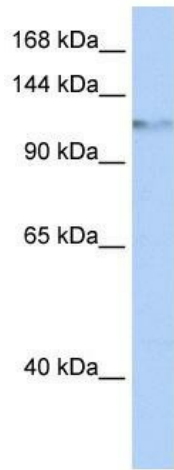
Product Type:	Primary Antibodies
Applications:	WB
Recommended Dilution:	WB
Reactivity:	Human
Host:	Rabbit
Isotype:	IgG
Clonality:	Polyclonal
Immunogen:	The immunogen for anti-HELLS antibody: synthetic peptide directed towards the middle region of human HELLS. Synthetic peptide located within the following region: QSGLNLSKNFLDPKELMELLKSRDYEREIKGSREKVISDKDLELLLLDRSD
Formulation:	Liquid. Purified antibody supplied in 1x PBS buffer with 0.09% (w/v) sodium azide and 2% sucrose. <i>Note that this product is shipped as lyophilized powder to China customers.</i>
Concentration:	lot specific
Conjugation:	Unconjugated
Storage:	Store at -20°C as received.
Stability:	Stable for 12 months from date of receipt.
Predicted Protein Size:	92 kDa
Gene Name:	helicase, lymphoid-specific
Database Link:	<a href="#">NP_060533</a> <a href="#">Entrez Gene 3070 Human</a> <a href="#">Q9NRZ9</a>
Background:	This gene encodes a lymphoid-specific helicase. Other helicases function in processes involving DNA strand separation, including replication, repair, recombination, and transcription. This protein is thought to be involved with cellular proliferation and may play a role in leukemogenesis. Alternatively spliced transcript variants encoding different isoforms have been identified. [provided by RefSeq, Jan 2014]
Synonyms:	LSH; Nbla10143; PASG; SMARCA6



[View online »](#)

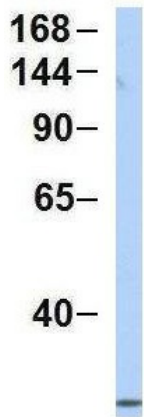
**Note:** Immunogen Sequence Homology: Human: 100%; Dog: 93%; Pig: 93%; Rat: 93%; Horse: 93%; Mouse: 93%; Bovine: 93%; Guinea pig: 93%; Rabbit: 86%

**Product images:**



WB Suggested Anti-HELLS Antibody Titration: 0.2-1 ug/ml; ELISA Titer: 1:1562500; Positive Control: HepG2 cell lysateHELLS is supported by BioGPS gene expression data to be expressed in HepG2

**HELLS**



Rabbit Anti-HELLS  
Sample Type: Human MCF7  
Antibody Concentration: 1ug/mL

Host: Rabbit; Target Name: HELLS; Sample Tissue: MCF7; Antibody Dilution: 1.0 ug/ml; HELLS is supported by BioGPS gene expression data to be expressed in MCF7