

Product datasheet for **TA341602**

DDX27 Rabbit Polyclonal Antibody

Product data:

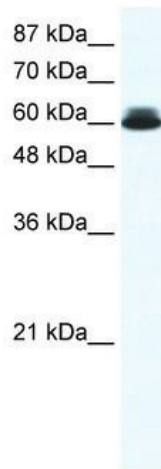
Product Type:	Primary Antibodies
Applications:	WB
Recommended Dilution:	WB
Reactivity:	Human
Host:	Rabbit
Isotype:	IgG
Clonality:	Polyclonal
Immunogen:	The immunogen for anti-DDX27 antibody: synthetic peptide directed towards the N terminal of human DDX27. Synthetic peptide located within the following region: DEKIEKVRKKRKTEDKEAKSGKLEKEKEAKEGSEPKEQEDLQENDEEGSE
Formulation:	Liquid. Purified antibody supplied in 1x PBS buffer with 0.09% (w/v) sodium azide and 2% sucrose. <i>Note that this product is shipped as lyophilized powder to China customers.</i>
Concentration:	lot specific
Conjugation:	Unconjugated
Storage:	Store at -20°C as received.
Stability:	Stable for 12 months from date of receipt.
Predicted Protein Size:	88 kDa
Gene Name:	DEAD-box helicase 27
Database Link:	NP_060365 Entrez Gene 55661 Human Q96GQ7



[View online »](#)

- Background:** DEAD box proteins, characterized by the conserved motif Asp-Glu-Ala-Asp (DEAD), are putative RNA helicases. They are implicated in a number of cellular processes involving alteration of RNA secondary structure such as translation initiation, nuclear and mitochondrial splicing, and ribosome and spliceosome assembly. Based on their distribution patterns, some members of this family are believed to be involved in embryogenesis, spermatogenesis, and cellular growth and division. This gene encodes a DEAD box protein, the function of which has not been determined. [provided by RefSeq, Jul 2008]
- Synonyms:** dJ686N3.1; DRS1; Drs1p; HSPC259; PP3241; RHLP
- Note:** Immunogen Sequence Homology: Dog: 100%; Pig: 100%; Horse: 100%; Human: 100%; Bovine: 100%; Guinea pig: 100%; Rat: 93%; Rabbit: 93%; Yeast: 90%; Mouse: 86%

Product images:



WB Suggested Anti-DDX27 Antibody Titration: 0.625 ug/ml; ELISA Titer: 1:1562500; Positive Control: HepG2 cell lysate. DDX27 is strongly supported by BioGPS gene expression data to be expressed in Human HepG2 cells