

## Product datasheet for **TA341601**

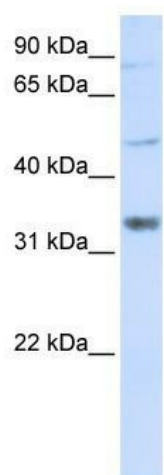
### ZCCHC17 Rabbit Polyclonal Antibody

#### Product data:

Product Type:	Primary Antibodies
Applications:	WB
Recommended Dilution:	WB
Reactivity:	Human
Host:	Rabbit
Isotype:	IgG
Clonality:	Polyclonal
Immunogen:	The immunogen for anti-ZCCHC17 antibody: synthetic peptide directed towards the middle region of human ZCCHC17. Synthetic peptide located within the following region: CFMQPGGTKYSLIPDEEEEEKEEAKSAEFKPDPTRNPSRKRKKEKKEKKEK
Formulation:	Liquid. Purified antibody supplied in 1x PBS buffer with 0.09% (w/v) sodium azide and 2% sucrose. <i>Note that this product is shipped as lyophilized powder to China customers.</i>
Concentration:	lot specific
Conjugation:	Unconjugated
Storage:	Store at -20°C as received.
Stability:	Stable for 12 months from date of receipt.
Predicted Protein Size:	27 kDa
Gene Name:	zinc finger CCHC-type containing 17
Database Link:	<a href="#">NP_057589</a> <a href="#">Entrez Gene 51538 Human</a> <a href="#">Q9NP64</a>
Background:	ZCCHC17 contains 1 CCHC-type zinc finger and 1 S1 motif domain. The exact function of ZDHHC19 remains unknown.
Synonyms:	HSPC251; pNO40; PS1D
Note:	Immunogen Sequence Homology: Dog: 100%; Human: 100%; Pig: 93%; Rat: 93%; Bovine: 93%; Guinea pig: 93%; Horse: 86%; Rabbit: 86%



[View online »](#)

**Product images:**

WB Suggested Anti-ZCCHC17 Antibody Titration:  
0.2-1 ug/ml; ELISA Titer: 1:62500; Positive Control:  
Transfected 293T