

Product datasheet for **TA341595**

MTREX Rabbit Polyclonal Antibody

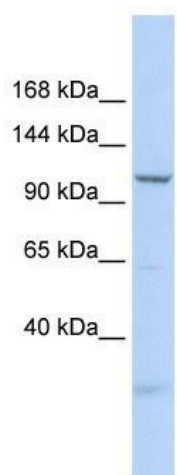
Product data:

Product Type:	Primary Antibodies
Applications:	WB
Recommended Dilution:	WB
Reactivity:	Human
Host:	Rabbit
Isotype:	IgG
Clonality:	Polyclonal
Immunogen:	The immunogen for anti-SKIV2L2 antibody: synthetic peptide directed towards the N terminal of human SKIV2L2. Synthetic peptide located within the following region: KGPPGSADKAGKRFDGKLGSESTNNGKNKRDVDFEGTDEPIFGKKPRIEE
Formulation:	Liquid. Purified antibody supplied in 1x PBS buffer with 0.09% (w/v) sodium azide and 2% sucrose. <i>Note that this product is shipped as lyophilized powder to China customers.</i>
Concentration:	lot specific
Conjugation:	Unconjugated
Storage:	Store at -20°C as received.
Stability:	Stable for 12 months from date of receipt.
Predicted Protein Size:	118 kDa
Gene Name:	Ski2 like RNA helicase 2
Database Link:	NP_056175 Entrez Gene 23517 Human P42285
Background:	SKIV2L2 may be involved in pre-mRNA splicing.
Synonyms:	Dob1; fSAP118; KIAA0052; Mtr4
Note:	Immunogen Sequence Homology: Dog: 100%; Human: 100%; Rabbit: 100%; Horse: 86%; Bovine: 86%; Pig: 85%; Mouse: 85%; Guinea pig: 85%
Protein Pathways:	RNA degradation



[View online »](#)

Product images:



WB Suggested Anti-SKIV2L2 Antibody Titration:
0.2-1 ug/ml; ELISA Titer: 1:312500; Positive
Control: 293T cell lysate SKIV2L2 is supported by
BioGPS gene expression data to be expressed in
HEK293T