

Product datasheet for **TA341588**

DDX58 Rabbit Polyclonal Antibody

Product data:

Product Type:	Primary Antibodies
Applications:	WB
Recommended Dilution:	WB
Reactivity:	Human
Host:	Rabbit
Isotype:	IgG
Clonality:	Polyclonal
Immunogen:	The immunogen for anti-DDX58 antibody: synthetic peptide directed towards the middle region of human DDX58. Synthetic peptide located within the following region: EECHYTVLGDAFKECFVSRPHPKPKQFSSFEKRAKIFCARQNCSDHWGIH
Formulation:	Liquid. Purified antibody supplied in 1x PBS buffer with 0.09% (w/v) sodium azide and 2% sucrose. <i>Note that this product is shipped as lyophilized powder to China customers.</i>
Concentration:	lot specific
Conjugation:	Unconjugated
Storage:	Store at -20°C as received.
Stability:	Stable for 12 months from date of receipt.
Predicted Protein Size:	106 kDa
Gene Name:	DEXD/H-box helicase 58
Database Link:	NP_055129 Entrez Gene 23586 Human O95786
Background:	DEAD box proteins, characterized byThe conserved motif Asp-Glu-Ala-Asp (DEAD), are putative RNA helicases which are implicated in a number of cellular processes involving RNA binding and alteration of RNA secondary structure.This gene encodes a protein containing RNA helicase-DEAD box protein motifs and a caspase recruitment domain (CARD). It is involved in viral double-stranded (ds) RNA recognition andThe regulation of immune response. [provided by RefSeq, Jul 2008]



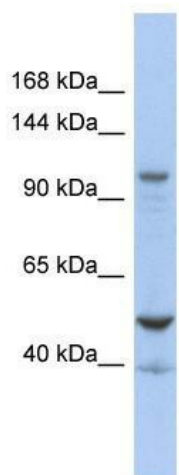
[View online »](#)

Synonyms: RIG-I; RIGI; RLR-1

Note: Immunogen Sequence Homology: Human: 100%; Horse: 79%

Protein Pathways: Cytosolic DNA-sensing pathway, RIG-I-like receptor signaling pathway

Product images:



WB Suggested Anti-DDX58 Antibody Titration:
0.2-1 ug/ml; ELISA Titer: 1:1562500; Positive
Control: OVCAR-3 cell lysate