

Product datasheet for **TA341585**

RAD54B Rabbit Polyclonal Antibody

Product data:

Product Type:	Primary Antibodies
Applications:	IHC, WB
Recommended Dilution:	WB, IHC
Reactivity:	Human
Host:	Rabbit
Isotype:	IgG
Clonality:	Polyclonal
Immunogen:	The immunogen for anti-RAD54B antibody: synthetic peptide directed towards the middle region of human RAD54B. Synthetic peptide located within the following region: NSLKPLSMSQLKQWKHFSGDHLNLTDPFLERITENVSFIFQNITTQATGT
Formulation:	Liquid. Purified antibody supplied in 1x PBS buffer with 0.09% (w/v) sodium azide and 2% sucrose. <i>Note that this product is shipped as lyophilized powder to China customers.</i>
Concentration:	lot specific
Conjugation:	Unconjugated
Storage:	Store at -20°C as received.
Stability:	Stable for 12 months from date of receipt.
Predicted Protein Size:	103 kDa
Gene Name:	RAD54 homolog B (<i>S. cerevisiae</i>)
Database Link:	NP_036547 Entrez Gene 25788 Human Q9Y620



[View online »](#)

Background: The protein encoded by this gene belongs to the DEAD-like helicase superfamily. It shares similarity with *Saccharomyces cerevisiae* RAD54 and RDH54, both of which are involved in homologous recombination and repair of DNA. This protein binds to double-stranded DNA, and displays ATPase activity in the presence of DNA. This gene is highly expressed in testis and spleen, which suggests active roles in meiotic and mitotic recombination. Homozygous mutations of this gene were observed in primary lymphoma and colon cancer. [provided by RefSeq, Jul 2008]

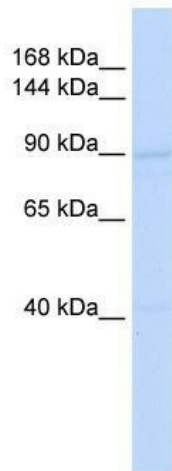
Synonyms: RDH54

Note: Immunogen Sequence Homology: Dog: 100%; Human: 100%; Bovine: 100%; Pig: 92%; Rat: 92%; Horse: 92%; Mouse: 92%; Rabbit: 92%; Guinea pig: 92%

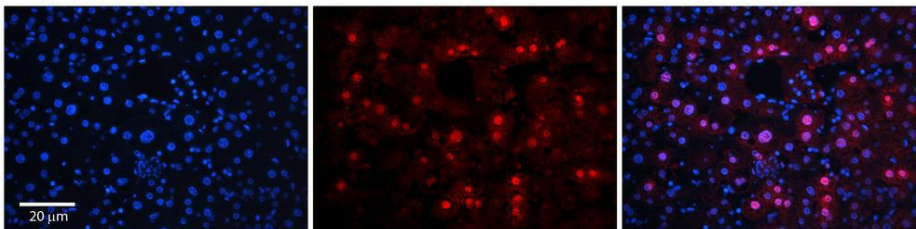
Protein Families: Druggable Genome

Protein Pathways: Homologous recombination

Product images:



WB Suggested Anti-RAD54B Antibody Titration: 0.2-1 ug/ml; ELISA Titer: 1:1562500; Positive Control: HeLa cell lysate. RAD54B is supported by BioGPS gene expression data to be expressed in HeLa



Rabbit Anti-RAD54B Antibody; Formalin Fixed Paraffin Embedded Tissue: Human Adult Liver; Observed Staining: Nuclear in hepatocytes, strong signal, wide tissue distribution; Primary Antibody Concentration: 1:100; Secondary Antibody: Donkey anti-Rabbit-Cy3