

Product datasheet for **TA341582**

DDX26 (INTS6) Rabbit Polyclonal Antibody

Product data:

Product Type:	Primary Antibodies
Applications:	WB
Recommended Dilution:	WB
Reactivity:	Human
Host:	Rabbit
Isotype:	IgG
Clonality:	Polyclonal
Immunogen:	The immunogen for anti-INTS6 antibody: synthetic peptide directed towards the C terminal of human INTS6. Synthetic peptide located within the following region: GFLENHEEPRDKEQCAEENIPASSLNKGKLMHCRSHEEVNTELKAQIMK
Formulation:	Liquid. Purified antibody supplied in 1x PBS buffer with 0.09% (w/v) sodium azide and 2% sucrose.
Concentration:	lot specific
Conjugation:	Unconjugated
Storage:	Store at -20°C as received.
Stability:	Stable for 12 months from date of receipt.
Predicted Protein Size:	99 kDa
Gene Name:	integrator complex subunit 6
Database Link:	NP_001035026 Entrez Gene 26512 Human Q9UL03
Background:	DEAD box proteins, characterized byThe conserved motif Asp-Glu-Ala-Asp (DEAD), are putative RNA helicases.The protein encoded byThis gene is a DEAD box protein that is part of a complex that interacts withThe C-terminus of RNA polymerase II and is involved in 3' end processing of snRNAs. In addition,This gene is a candidate tumor suppressor and located inThe critical region of loss of heterozygosity (LOH). Three transcript variants encoding two different isoforms have been found forThis gene. [provided by RefSeq, Jul 2008]
Synonyms:	DBI-1; DDX26; DDX26A; DICE1; HDB; INT6; Notch12

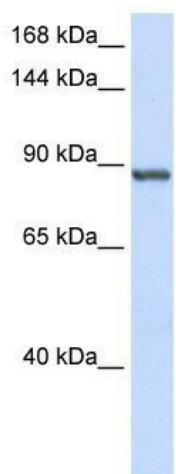


[View online »](#)

Note: Immunogen Sequence Homology: Dog: 100%; Pig: 100%; Horse: 100%; Human: 100%; Bovine: 100%; Rabbit: 100%; Rat: 93%; Mouse: 93%

Protein Families: Druggable Genome

Product images:



WB Suggested Anti-INTS6 Antibody Titration: 0.2-1 ug/ml; ELISA Titer: 1:62500; Positive Control: Human Placenta