

## Product datasheet for **TA341581**

### DDX42 Rabbit Polyclonal Antibody

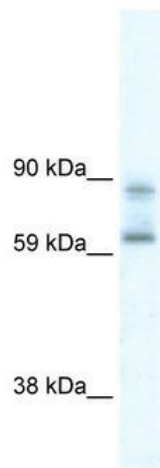
#### Product data:

Product Type:	Primary Antibodies
Applications:	WB
Recommended Dilution:	WB
Reactivity:	Human
Host:	Rabbit
Isotype:	IgG
Clonality:	Polyclonal
Immunogen:	The immunogen for anti-DDX42 antibody: synthetic peptide directed towards the N terminal of human DDX42. Synthetic peptide located within the following region: PLEAFMAEVEDQAARDMKRLEEKDKERKNVKGIRDDIEEEDDQEAYFRYM
Formulation:	Liquid. Purified antibody supplied in 1x PBS buffer with 0.09% (w/v) sodium azide and 2% sucrose. <i>Note that this product is shipped as lyophilized powder to China customers.</i>
Concentration:	lot specific
Conjugation:	Unconjugated
Storage:	Store at -20°C as received.
Stability:	Stable for 12 months from date of receipt.
Predicted Protein Size:	103 kDa
Gene Name:	DEAD-box helicase 42
Database Link:	<a href="#">NP_031398</a> <a href="#">Entrez Gene 11325 Human</a> <a href="#">Q86XP3</a>



[View online »](#)

<b>Background:</b>	This gene encodes a member of the Asp-Glu-Ala-Asp (DEAD) box protein family. Members of this protein family are putative RNA helicases, and are implicated in a number of cellular processes involving alteration of RNA secondary structure such as translation initiation, nuclear and mitochondrial splicing, and ribosome and spliceosome assembly. Members of this family are believed to be involved in embryogenesis, spermatogenesis, and cellular growth and division. Two transcript variants encoding the same protein have been identified for this gene. [provided by RefSeq, Jul 2008]
<b>Synonyms:</b>	DDX42P; RHELP; RNAHP; SF3B8; SF3b125
<b>Note:</b>	Immunogen Sequence Homology: Dog: 100%; Pig: 100%; Rat: 100%; Horse: 100%; Human: 100%; Mouse: 100%; Bovine: 100%; Rabbit: 100%; Guinea pig: 100%
<b>Protein Pathways:</b>	Spliceosome

**Product images:**

WB Suggested Anti-DDX42 Antibody Titration:  
0.2-1 ug/ml; ELISA Titer: 1:1562500; Positive  
Control: Human Thymus