

## Product datasheet for **TA341578**

### Helicase SKI2W (SKIV2L) Rabbit Polyclonal Antibody

#### Product data:

Product Type:	Primary Antibodies
Applications:	WB
Recommended Dilution:	WB
Reactivity:	Human
Host:	Rabbit
Isotype:	IgG
Clonality:	Polyclonal
Immunogen:	The immunogen for anti-SKIV2L antibody: synthetic peptide directed towards the middle region of human SKIV2L. Synthetic peptide located within the following region: SSNSTSRVFTTLVLCDKPLSQDPQDRGPATAEVPYPDDLVGFKLFLPEGP
Formulation:	Liquid. Purified antibody supplied in 1x PBS buffer with 0.09% (w/v) sodium azide and 2% sucrose. <i>Note that this product is shipped as lyophilized powder to China customers.</i>
Concentration:	lot specific
Conjugation:	Unconjugated
Storage:	Store at -20°C as received.
Stability:	Stable for 12 months from date of receipt.
Predicted Protein Size:	138 kDa
Gene Name:	Ski2 like RNA helicase
Database Link:	<a href="#">NP_008860</a> <a href="#">Entrez Gene 6499 Human Q15477</a>



[View online »](#)

**Background:**

DEAD box proteins, characterized by the conserved motif Asp-Glu-Ala-Asp (DEAD), are putative RNA helicases. They are implicated in a number of cellular processes involving alteration of RNA secondary structure such as translation initiation, nuclear and mitochondrial splicing, and ribosome and spliceosome assembly. Based on their distribution patterns, some members of this family are believed to be involved in embryogenesis, spermatogenesis, and cellular growth and division. This gene encodes a DEAD box protein, which is a human homologue of yeast SKI2 and may be involved in antiviral activity by blocking translation of poly(A) deficient mRNAs. This gene is located in the class III region of the major histocompatibility complex. [provided by RefSeq, Jul 2008]

**Synonyms:**

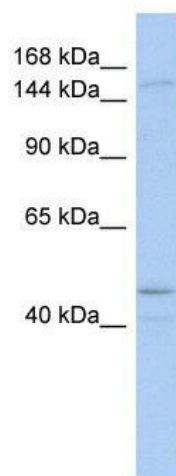
170A; DDX13; HLP; SKI2; SKI2W; SKIV2; SKIV2L1; THES2

**Note:**

Immunogen Sequence Homology: Human: 100%; Rabbit: 79%

**Protein Pathways:**

RNA degradation

**Product images:**

WB Suggested Anti-SKIV2L Antibody Titration: 0.2-1 ug/ml; ELISA Titer: 1:1562500; Positive Control: COLO205 cell lysate