

## Product datasheet for **TA341575**

### DHX8 Rabbit Polyclonal Antibody

#### Product data:

Product Type:	Primary Antibodies
Applications:	WB
Recommended Dilution:	WB
Reactivity:	Human
Host:	Rabbit
Isotype:	IgG
Clonality:	Polyclonal
Immunogen:	The immunogen for anti-DHX8 antibody: synthetic peptide directed towards the N terminal of human DHX8. Synthetic peptide located within the following region: VKNGAEFTDSLISNLLRLIQTMRPPAKPSTSKDPVVKPKTEKEKLKELFP
Formulation:	Liquid. Purified antibody supplied in 1x PBS buffer with 0.09% (w/v) sodium azide and 2% sucrose. <i>Note that this product is shipped as lyophilized powder to China customers.</i>
Concentration:	lot specific
Conjugation:	Unconjugated
Storage:	Store at -20°C as received.
Stability:	Stable for 12 months from date of receipt.
Predicted Protein Size:	139 kDa
Gene Name:	DEAH-box helicase 8
Database Link:	<a href="#">NP_004932</a> <a href="#">Entrez Gene 1659 Human</a> <a href="#">Q14562</a>



[View online »](#)

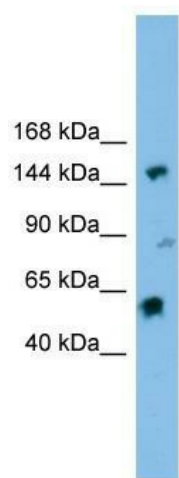
**Background:** DEAD box proteins, characterized by the conserved motif Asp-Glu-Ala-Asp (DEAD), are putative RNA helicases. They are implicated in a number of cellular processes involving alteration of RNA secondary structure such as translation initiation, nuclear and mitochondrial splicing, and ribosome and spliceosome assembly. Based on their distribution patterns, some members of this family are believed to be involved in embryogenesis, spermatogenesis, and cellular growth and division. This gene encodes a DEAD box protein, which is highly homologous to yeast Prp22. This protein facilitates nuclear export of spliced mRNA by releasing the RNA from the spliceosome. [provided by RefSeq, Jul 2008]

**Synonyms:** DDX8; HRH1; PRP22; PRPF22

**Note:** Immunogen Sequence Homology: Pig: 100%; Human: 100%; Mouse: 100%; Bovine: 100%; Rabbit: 100%; Guinea pig: 100%; Rat: 93%; Horse: 93%; Dog: 88%

**Protein Pathways:** Spliceosome

### Product images:



WB Suggested Anti-DHX8 Antibody Titration: 0.2-1 ug/ml; ELISA Titer: 1:312500; Positive Control: HT1080 cell lysate. DHX8 is supported by BioGPS gene expression data to be expressed in HT1080