

## Product datasheet for **TA341574**

### DDX1 Rabbit Polyclonal Antibody

#### Product data:

Product Type:	Primary Antibodies
Applications:	WB
Recommended Dilution:	WB
Reactivity:	Human
Host:	Rabbit
Isotype:	IgG
Clonality:	Polyclonal
Immunogen:	The immunogen for anti-DDX1 antibody: synthetic peptide directed towards the middle region of human DDX1. Synthetic peptide located within the following region: KGEDSVPTVHHVVPVNPKTDLWRLGKSHIRTDDVHAKDNTRPGANS
Formulation:	Liquid. Purified antibody supplied in 1x PBS buffer with 0.09% (w/v) sodium azide and 2% sucrose. <i>Note that this product is shipped as lyophilized powder to China customers.</i>
Concentration:	lot specific
Conjugation:	Unconjugated
Storage:	Store at -20°C as received.
Stability:	Stable for 12 months from date of receipt.
Predicted Protein Size:	81 kDa
Gene Name:	DEAD/H-box helicase 1
Database Link:	<a href="#">NP_004930</a> <a href="#">Entrez Gene 1653 Human</a> <a href="#">Q92499</a>



[View online »](#)

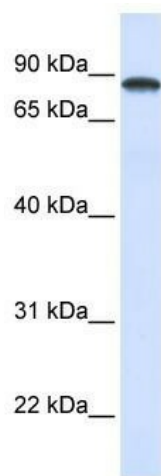
**Background:** DEAD box proteins, characterized by the conserved motif Asp-Glu-Ala-Asp (DEAD), are putative RNA helicases. They are implicated in a number of cellular processes involving alteration of RNA secondary structure such as translation initiation, nuclear and mitochondrial splicing, and ribosome and spliceosome assembly. Based on their distribution patterns, some members of this family are believed to be involved in embryogenesis, spermatogenesis, and cellular growth and division. This gene encodes a DEAD box protein of unknown function. It shows high transcription levels in 2 retinoblastoma cell lines and in tissues of neuroectodermal origin. [provided by RefSeq, Jul 2008]

**Synonyms:** DBP-RB; UKVH5d

**Note:** Immunogen Sequence Homology: Dog: 100%; Pig: 100%; Rat: 100%; Human: 100%; Mouse: 100%; Guinea pig: 100%; Bovine: 93%; Horse: 92%; Rabbit: 92%; Zebrafish: 85%

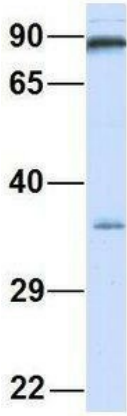
**Protein Families:** Druggable Genome

### Product images:



WB Suggested Anti-DDX1 Antibody Titration: 0.2-1 ug/ml; ELISA Titer: 1:1562500; Positive Control: Human Muscle

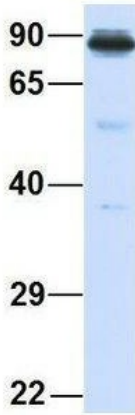
### DDX1



Rabbit Anti-DDX1  
 Sample Type: Human Fetal Brain  
 Antibody Concentration: 1ug/mL

Host: Rabbit; Target Name: DDX1; Sample Tissue: Human Fetal Brain; Antibody Dilution: 1.0 ug/ml

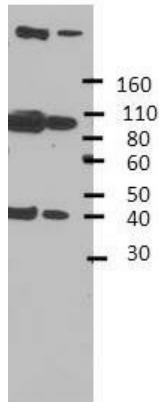
### DDX1



Rabbit Anti-DDX1  
 Sample Type: Human Fetal Lung  
 Antibody Concentration: 1ug/mL

Host: Rabbit; Target Name: DDX1; Sample Tissue: Human Fetal Lung; Antibody Dilution: 1.0 ug/ml

### DDX1



DDX1 antibody - middle region validated by WB using Hek 293 Whole Cell Lysate at 1:4,000. DDX1 is supported by BioGPS gene expression data to be expressed in HEK293