

Product datasheet for **TA341571**

DDX21 Rabbit Polyclonal Antibody

Product data:

Product Type:	Primary Antibodies
Applications:	WB
Recommended Dilution:	WB
Reactivity:	Human
Host:	Rabbit
Isotype:	IgG
Clonality:	Polyclonal
Immunogen:	The immunogen for anti-DDX21 antibody: synthetic peptide directed towards the C terminal of human DDX21. Synthetic peptide located within the following region: FRGQRDGNRRFRGQREGSRGPRGQRSGGGNKSQRSQNKQKRSFSKAFGQ
Formulation:	Liquid. Purified antibody supplied in 1x PBS buffer with 0.09% (w/v) sodium azide and 2% sucrose. <i>Note that this product is shipped as lyophilized powder to China customers.</i>
Concentration:	lot specific
Conjugation:	Unconjugated
Storage:	Store at -20°C as received.
Stability:	Stable for 12 months from date of receipt.
Predicted Protein Size:	86 kDa
Gene Name:	DEAD-box helicase 21
Database Link:	NP_004719 Entrez Gene 9188 Human Q9NR30



[View online »](#)

Background:

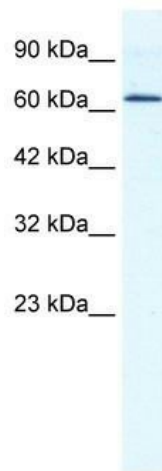
DEAD box proteins, characterized by the conserved motif Asp-Glu-Ala-Asp (DEAD), are putative RNA helicases. They are implicated in a number of cellular processes involving alteration of RNA secondary structure such as translation initiation, nuclear and mitochondrial splicing, and ribosome and spliceosome assembly. Based on their distribution patterns, some members of this family are believed to be involved in embryogenesis, spermatogenesis, and cellular growth and division. This gene encodes a DEAD box protein, which is an antigen recognized by autoimmune antibodies from a patient with watermelon stomach disease. This protein unwinds double-stranded RNA, folds single-stranded RNA, and may play important roles in ribosomal RNA biogenesis, RNA editing, RNA transport, and general transcription. [provided by RefSeq, Jul 2008]

Synonyms:

GU; GUA; GuA; GURDB; RH-II

Note:

Immunogen Sequence Homology: Human: 100%; Dog: 93%; Pig: 93%; Rat: 93%; Horse: 93%; Rabbit: 93%; Bovine: 86%; Guinea pig: 86%

Product images:

WB Suggested Anti-DDX21 Antibody Titration:
1.25 ug/ml; ELISA Titer: 1:1562500; Positive
Control: HepG2 cell lysate
DDX21 is supported by
BioGPS gene expression data to be expressed in
HepG2