

## Product datasheet for **TA341563**

### CHD1L Rabbit Polyclonal Antibody

#### Product data:

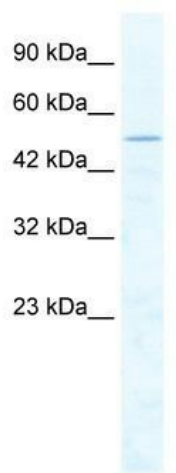
Product Type:	Primary Antibodies
Applications:	WB
Recommended Dilution:	WB
Reactivity:	Human
Host:	Rabbit
Isotype:	IgG
Clonality:	Polyclonal
Immunogen:	The immunogen for anti-CHD1L antibody: synthetic peptide directed towards the middle region of human CHD1L. Synthetic peptide located within the following region: DALPAAEGGSRDQEEGKNHMYLFEGKDYSKEPSKEDRKSFEQLVNLQKTL
Formulation:	Liquid. Purified antibody supplied in 1x PBS buffer with 0.09% (w/v) sodium azide and 2% sucrose. <i>Note that this product is shipped as lyophilized powder to China customers.</i>
Concentration:	lot specific
Conjugation:	Unconjugated
Storage:	Store at -20°C as received.
Stability:	Stable for 12 months from date of receipt.
Predicted Protein Size:	45 kDa
Gene Name:	chromodomain helicase DNA binding protein 1 like
Database Link:	<a href="#">NP_001243265</a> <a href="#">Entrez Gene 9557 Human</a> <a href="#">Q86WJ1</a>
Background:	This gene encodes a DNA helicase protein involved in DNA repair. The protein converts ATP to add poly(ADP-ribose) as it regulates chromatin relaxation following DNA damage. Several alternatively spliced transcripts variants have been described for this gene. [provided by RefSeq, Jan 2012]
Synonyms:	ALC1; CHDL



[View online »](#)

**Note:** Immunogen Sequence Homology: Pig: 100%; Rat: 100%; Human: 100%; Mouse: 100%; Rabbit: 100%; Dog: 93%; Horse: 93%; Bovine: 93%; Guinea pig: 86%

### Product images:



WB Suggested Anti-CHD1L Antibody Titration: 2.5 ug/ml; ELISA Titer: 1:312500; Positive Control: Jurkat cell lysate. CHD1L is strongly supported by BioGPS gene expression data to be expressed in Human Jurkat cells