

Product datasheet for **TA341562**

RECQL5 Rabbit Polyclonal Antibody

Product data:

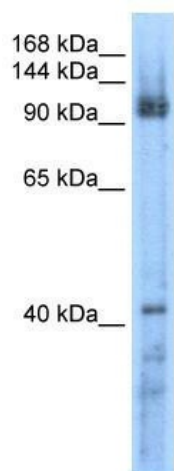
Product Type:	Primary Antibodies
Applications:	WB
Recommended Dilution:	WB
Reactivity:	Human
Host:	Rabbit
Isotype:	IgG
Clonality:	Polyclonal
Immunogen:	The immunogen for anti-RECQL5 antibody: synthetic peptide directed towards the middle region of human RECQL5. Synthetic peptide located within the following region: CDHCQNPTAVRRRLEALERSSSWKTCIGPSQNGFDPELYEGGRKGYGD
Formulation:	Liquid. Purified antibody supplied in 1x PBS buffer with 0.09% (w/v) sodium azide and 2% sucrose. <i>Note that this product is shipped as lyophilized powder to China customers.</i>
Concentration:	lot specific
Conjugation:	Unconjugated
Storage:	Store at -20°C as received.
Stability:	Stable for 12 months from date of receipt.
Predicted Protein Size:	109 kDa
Gene Name:	RecQ like helicase 5
Database Link:	NP_004250 Entrez Gene 9400 Human O94762
Background:	The protein encoded byThis gene is a helicase that is important for genome stability.The encoded protein also prevents aberrant homologous recombination by displacing RAD51 from ssDNA. Three transcript variants encoding different isoforms have been found forThis gene. [provided by RefSeq, Jul 2011]
Synonyms:	RECQ5



[View online »](#)

Note: Immunogen Sequence Homology: Human: 100%; Zebrafish: 91%; Dog: 86%; Rat: 86%; Horse: 86%; Mouse: 86%; Bovine: 86%; Rabbit: 86%; Pig: 79%; Guinea pig: 79%

Product images:



WB Suggested Anti-RECQL5 Antibody Titration:
0.2-1 ug/ml; ELISA Titer: 1:62500; Positive Control:
Transfected 293T