

Product datasheet for **TA341557**

DHX15 Rabbit Polyclonal Antibody

Product data:

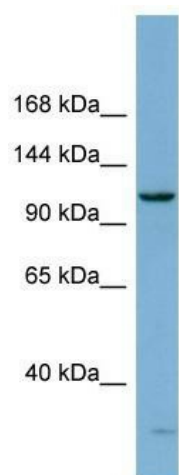
Product Type:	Primary Antibodies
Applications:	WB
Recommended Dilution:	WB
Reactivity:	Human
Host:	Rabbit
Isotype:	IgG
Clonality:	Polyclonal
Immunogen:	The immunogen for anti-DHX15 antibody: synthetic peptide directed towards the N terminal of human DHX15. Synthetic peptide located within the following region: GHTSLPQCINPFTNLPHTPRYYDILKKRLQLPVWEYKDRFTDILVRHQSF
Formulation:	Liquid. Purified antibody supplied in 1x PBS buffer with 0.09% (w/v) sodium azide and 2% sucrose. <i>Note that this product is shipped as lyophilized powder to China customers.</i>
Concentration:	lot specific
Conjugation:	Unconjugated
Storage:	Store at -20°C as received.
Stability:	Stable for 12 months from date of receipt.
Predicted Protein Size:	91 kDa
Gene Name:	DEAH-box helicase 15
Database Link:	NP_001349 Entrez Gene 1665 Human O43143
Background:	The protein encoded byThis gene is a putative ATP-dependent RNA helicase implicated in pre-mRNA splicing. [provided by RefSeq, Jul 2008]
Synonyms:	DBP1; DDX15; HRH2; PRP43; PRPF43; PrPp43p
Note:	Immunogen Sequence Homology: Dog: 100%; Pig: 100%; Rat: 100%; Horse: 100%; Human: 100%; Mouse: 100%; Bovine: 100%; Rabbit: 100%; Guinea pig: 100%; Zebrafish: 93%



[View online »](#)

Protein Pathways: Spliceosome

Product images:



WB Suggested Anti-DHX15 Antibody Titration:
0.2-1 ug/ml; ELISA Titer: 1:62500; Positive Control:
THP-1 cell lysate