

## Product datasheet for **TA341556**

### RNA Helicase A (DHX9) Rabbit Polyclonal Antibody

#### Product data:

Product Type:	Primary Antibodies
Applications:	IHC, WB
Recommended Dilution:	WB, IHC
Reactivity:	Human
Host:	Rabbit
Isotype:	IgG
Clonality:	Polyclonal
Immunogen:	The immunogen for anti-DHX9 antibody: synthetic peptide directed towards the N terminal of human DHX9. Synthetic peptide located within the following region: GLHGNWTLLENAKARLNQYFQKEKIQGEYKYTQVGPDPHNRSFIAEMTIYIK
Formulation:	Liquid. Purified antibody supplied in 1x PBS buffer with 0.09% (w/v) sodium azide and 2% sucrose. <i>Note that this product is shipped as lyophilized powder to China customers.</i>
Concentration:	lot specific
Conjugation:	Unconjugated
Storage:	Store at -20°C as received.
Stability:	Stable for 12 months from date of receipt.
Predicted Protein Size:	141 kDa
Gene Name:	DEAH-box helicase 9
Database Link:	<a href="#">NP_001348</a> <a href="#">Entrez Gene 1660 Human Q08211</a>



[View online »](#)

**Background:**

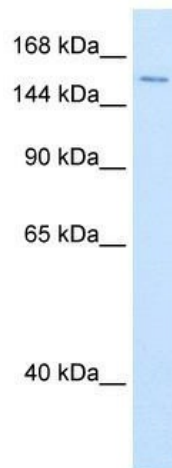
This gene encodes a member of the DEAH-containing family of RNA helicases. The encoded protein is an enzyme that catalyzes the ATP-dependent unwinding of double-stranded RNA and DNA-RNA complexes. This protein localizes to both the nucleus and the cytoplasm and functions as a transcriptional regulator. This protein may also be involved in the expression and nuclear export of retroviral RNAs. Alternate splicing results in multiple transcript variants. Pseudogenes of this gene are found on chromosomes 11 and 13. [provided by RefSeq, Feb 2010]

**Synonyms:**

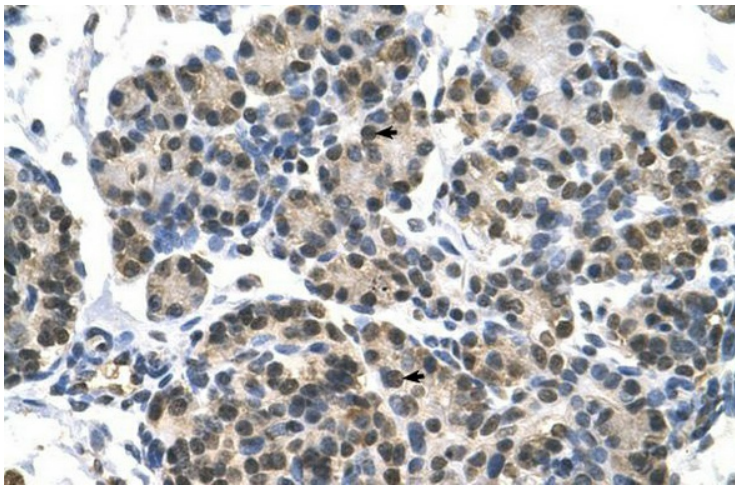
DDX9; LKP; NDH2; NDHII; RHA

**Note:**

Immunogen Sequence Homology: Dog: 100%; Pig: 100%; Rat: 100%; Horse: 100%; Human: 100%; Mouse: 100%; Bovine: 100%; Rabbit: 100%

**Product images:**


WB Suggested Anti-DHX9 Antibody Titration: 0.2-1 ug/ml; ELISA Titer: 1:62500; Positive Control: Transfected 293T



Human Pancreas