

Product datasheet for **TA341551**

AKAP7 Rabbit Polyclonal Antibody

Product data:

| | |
|-------------------------|---|
| Product Type: | Primary Antibodies |
| Applications: | WB |
| Recommended Dilution: | WB |
| Reactivity: | Human |
| Host: | Rabbit |
| Isotype: | IgG |
| Clonality: | Polyclonal |
| Immunogen: | The immunogen for anti-AKAP7 antibody: synthetic peptide directed towards the middle region of human AKAP7. Synthetic peptide located within the following region: LELKPFIEELLQGKHLTLPFQGIGTFGNQVGFVKLAEGDHVNSLLEIAET |
| Formulation: | Liquid. Purified antibody supplied in 1x PBS buffer with 0.09% (w/v) sodium azide and 2% sucrose. <i>Note that this product is shipped as lyophilized powder to China customers.</i> |
| Concentration: | lot specific |
| Conjugation: | Unconjugated |
| Storage: | Store at -20°C as received. |
| Stability: | Stable for 12 months from date of receipt. |
| Predicted Protein Size: | 36 kDa |
| Gene Name: | A-kinase anchoring protein 7 |
| Database Link: | NP_057461 Entrez Gene 9465 Human O43687 |
| Background: | This gene encodes a member of the A-kinase anchoring protein (AKAP) family, a group of functionally related proteins that bind to a regulatory subunit (RII) of cAMP-dependent protein kinase A (PKA) and target the enzyme to specific subcellular compartments. AKAPs have a common RII-binding domain, but contain different targeting motifs responsible for directing PKA to distinct intracellular locations. Three alternatively spliced transcript variants encoding different isoforms have been described. [provided by RefSeq, Apr 2011] |



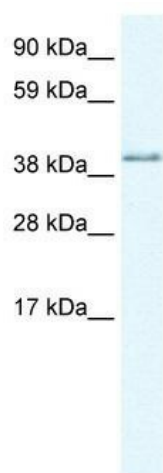
[View online »](#)

Synonyms: AKAP15; AKAP18

Note: Immunogen Sequence Homology: Pig: 100%; Human: 100%; Guinea pig: 100%; Bovine: 93%; Rat: 92%; Horse: 92%; Mouse: 92%; Rabbit: 92%; Dog: 85%

Protein Families: Druggable Genome

Product images:



WB Suggested Anti-AKAP7 Antibody Titration:
1.25 ug/ml; ELISA Titer: 1:1562500; Positive
Control: Human brain