

Product datasheet for **TA341548**

C17orf27 (RNF213) Rabbit Polyclonal Antibody

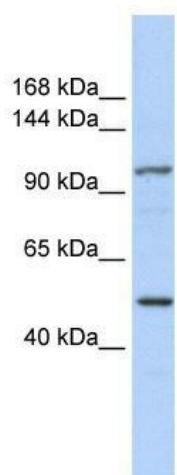
Product data:

Product Type:	Primary Antibodies
Applications:	WB
Recommended Dilution:	WB
Reactivity:	Human
Host:	Rabbit
Isotype:	IgG
Clonality:	Polyclonal
Immunogen:	The immunogen for anti-KIAA1618 antibody: synthetic peptide directed towards the N terminal of human KIAA1618. Synthetic peptide located within the following region: GEAGVATGSEAQSSPQFQDHTEGEDQDASIPSGGRGLSQEGTGPPTSAGE
Formulation:	Liquid. Purified antibody supplied in 1x PBS buffer with 0.09% (w/v) sodium azide and 2% sucrose.
Concentration:	lot specific
Conjugation:	Unconjugated
Storage:	Store at -20°C as received.
Stability:	Stable for 12 months from date of receipt.
Predicted Protein Size:	118 kDa
Gene Name:	ring finger protein 213
Database Link:	NP_066005 Entrez Gene 57674 Human Q63HN8
Background:	The exact function of This protein remains unknown.
Synonyms:	ALO17; C17orf27; KIAA1618; MYMY2; MYSTR; NET57
Note:	Immunogen Sequence Homology: Human: 100%
Protein Families:	Druggable Genome, Transcription Factors



[View online »](#)

Product images:



WB Suggested Anti-KIAA1618 Antibody Titration:
0.2-1 ug/ml; ELISA Titer: 1:312500; Positive
Control: Hela cell lysate