

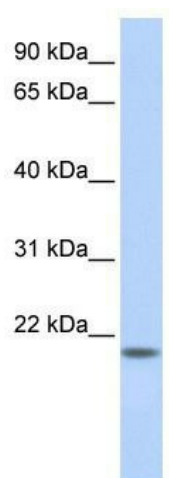
Product datasheet for TA341537

C20orf203 Rabbit Polyclonal Antibody

Product data:

Product Type:	Primary Antibodies
Applications:	WB
Recommended Dilution:	WB
Reactivity:	Human
Host:	Rabbit
Isotype:	IgG
Clonality:	Polyclonal
Immunogen:	The immunogen for anti-FLJ33706 antibody: synthetic peptide directed towards the C terminal of human FLJ33706. Synthetic peptide located within the following region: RMGTVGDFGQALSSLAWTSTCFQDFCLPSLPGKLPAPLISKQQFLSNSSR
Formulation:	Liquid. Purified antibody supplied in 1x PBS buffer with 0.09% (w/v) sodium azide and 2% sucrose.
Concentration:	lot specific
Conjugation:	Unconjugated
Storage:	Store at -20°C as received.
Stability:	Stable for 12 months from date of receipt.
Predicted Protein Size:	221 kDa
Gene Name:	chromosome 20 open reading frame 203
Database Link:	NP_872390 Entrez Gene 284805 Human Q8NBC4
Background:	The exact function of FLJ33706 remains unknown.
Synonyms:	RP11-503P21.2
Note:	Immunogen Sequence Homology: Human: 100%


[View online »](#)

Product images:

WB Suggested Anti-FLJ33706 Antibody Titration:
0.2-1 ug/ml; ELISA Titer: 1:312500; Positive
Control: HepG2 cell lysate