

## Product datasheet for **TA341536**

### ZNF778 Rabbit Polyclonal Antibody

#### Product data:

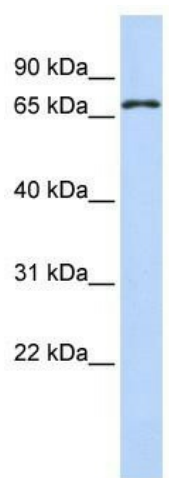
Product Type:	Primary Antibodies
Applications:	WB
Recommended Dilution:	WB
Reactivity:	Human
Host:	Rabbit
Isotype:	IgG
Clonality:	Polyclonal
Immunogen:	The immunogen for anti-ZNF778 antibody: synthetic peptide directed towards the N terminal of human ZNF778. Synthetic peptide located within the following region: ARSHNGGQLCDRTQCGEAFSEHSGSLSTHVRTQNTGDCVSNHYERDFFIP
Formulation:	Liquid. Purified antibody supplied in 1x PBS buffer with 0.09% (w/v) sodium azide and 2% sucrose.
Concentration:	lot specific
Conjugation:	Unconjugated
Storage:	Store at -20°C as received.
Stability:	Stable for 12 months from date of receipt.
Predicted Protein Size:	82 kDa
Gene Name:	zinc finger protein 778
Database Link:	<a href="#">NP_872337</a> <a href="#">Entrez Gene 197320 Human</a> <a href="#">Q96MU6</a>
Background:	The protein encoded byThis gene is a member ofThe krueppel C2H2-type zinc-finger protein family, and it contains one KRAB domain and eighteen C2H2-type zinc fingers.This gene is a candidate gene for autism and variable cognitive impairment inThe 16q24.3 microdeletion syndrome. Alternatively spliced transcript variants have been found forThis gene. [provided by RefSeq, Jan 2011]
Synonyms:	FLJ31875; MGC150573


[View online »](#)

**Note:** Immunogen Sequence Homology: Human: 100%; Yeast: 79%; Rat: 77%; Horse: 77%; Mouse: 77%; Bovine: 77%; Rabbit: 77%

**Protein Families:** Transcription Factors

### Product images:



WB Suggested Anti-ZNF778 Antibody Titration:  
0.2-1 ug/ml; ELISA Titer: 1:312500; Positive  
Control: Hela cell lysate