

Product datasheet for **TA341530**

ZNF875 Rabbit Polyclonal Antibody

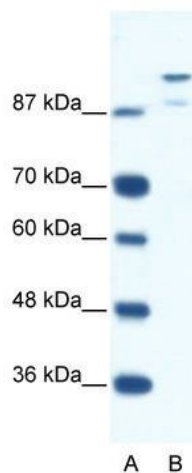
Product data:

Product Type:	Primary Antibodies
Applications:	WB
Recommended Dilution:	WB
Reactivity:	Human
Host:	Rabbit
Isotype:	IgG
Clonality:	Polyclonal
Immunogen:	The immunogen for anti-HKR1 antibody: synthetic peptide directed towards the N terminal of human HKR1. Synthetic peptide located within the following region: GTSKALSSPPEEQQPAQSKEDNTVVDIGSSPERRADLEETDKVLHGLEVS
Formulation:	Liquid. Purified antibody supplied in 1x PBS buffer with 0.09% (w/v) sodium azide and 2% sucrose.
Concentration:	lot specific
Conjugation:	Unconjugated
Storage:	Store at -20°C as received.
Stability:	Stable for 12 months from date of receipt.
Predicted Protein Size:	75 kDa
Gene Name:	HKR1, GLI-Kruppel zinc finger family member
Database Link:	NP_861451 Entrez Gene 284459 Human P10072
Background:	May be involved in transcriptional regulation.
Synonyms:	ZNF875
Note:	Immunogen Sequence Homology: Human: 100%
Protein Families:	Druggable Genome, Transcription Factors



[View online »](#)

Product images:



WB Suggested Anti-HKR1 Antibody Titration:
0.3125 ug/ml; ELISA Titer: 1:62500; Positive
Control: Jurkat cell lysate