

Product datasheet for **TA341528**

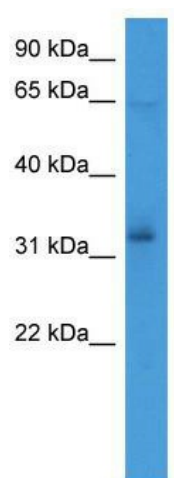
ZNF678 Rabbit Polyclonal Antibody

Product data:

Product Type:	Primary Antibodies
Applications:	WB
Recommended Dilution:	WB
Reactivity:	Human
Host:	Rabbit
Isotype:	IgG
Clonality:	Polyclonal
Immunogen:	The immunogen for anti-ZNF678 antibody: synthetic peptide directed towards the C terminal of human ZNF678. Synthetic peptide located within the following region: QFSSLTRHKRIHTGEKRYKCKECKGKGFYQSSIHISKYKRIYTGEEPDKCKK
Formulation:	Liquid. Purified antibody supplied in 1x PBS buffer with 0.09% (w/v) sodium azide and 2% sucrose.
Concentration:	lot specific
Conjugation:	Unconjugated
Storage:	Store at -20°C as received.
Stability:	Stable for 12 months from date of receipt.
Predicted Protein Size:	61 kDa
Gene Name:	zinc finger protein 678
Database Link:	NP_848644 Entrez Gene 339500 Human
Background:	ZNF678 may be involved in transcriptional regulation.
Synonyms:	FLJ18355; FLJ22822; MGC15634; MGC42493
Note:	Immunogen Sequence Homology: Human: 100%



[View online »](#)

Product images:


WB Suggested Anti-ZNF678 Antibody Titration:
0.2-1 ug/ml; ELISA Titer: 1:312500; Positive
Control: HT1080 cell lysate