

Product datasheet for **TA341526**

JAZF1 Rabbit Polyclonal Antibody

Product data:

Product Type:	Primary Antibodies
Applications:	WB
Recommended Dilution:	WB
Reactivity:	Human
Host:	Rabbit
Isotype:	IgG
Clonality:	Polyclonal
Immunogen:	The immunogen for anti-JAZF1 antibody: synthetic peptide directed towards the N terminal of human JAZF1. Synthetic peptide located within the following region: IDTDPRVLEKQELQQPTYVALSYINRFMTDAARREQESLKKKIQPKLSLT
Formulation:	Liquid. Purified antibody supplied in 1x PBS buffer with 0.09% (w/v) sodium azide and 2% sucrose. <i>Note that this product is shipped as lyophilized powder to China customers.</i>
Concentration:	lot specific
Conjugation:	Unconjugated
Storage:	Store at -20°C as received.
Stability:	Stable for 12 months from date of receipt.
Predicted Protein Size:	27 kDa
Gene Name:	JAZF zinc finger 1
Database Link:	NP_778231 Entrez Gene 221895 Human Q86VZ6
Background:	This gene encodes a nuclear protein with three C2H2-type zinc fingers, and functions as a transcriptional repressor. Chromosomal aberrations involving this gene are associated with endometrial stromal tumors. Alternatively spliced variants which encode different protein isoforms have been described; however, not all variants have been fully characterized [provided by RefSeq, Jul 2008].
Synonyms:	TIP27; ZNF802

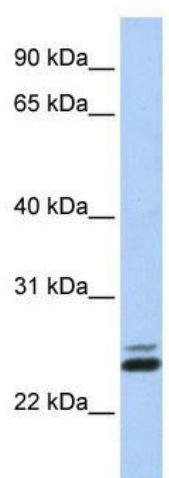


[View online »](#)

Note: Immunogen Sequence Homology: Pig: 100%; Horse: 100%; Human: 100%; Mouse: 100%; Rabbit: 100%; Zebrafish: 100%; Guinea pig: 100%; Dog: 92%

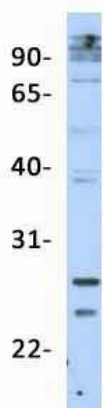
Protein Families: Druggable Genome, Transcription Factors

Product images:



WB Suggested Anti-JAZF1 Antibody Titration: 0.2-1 ug/ml; ELISA Titer: 1:62500; Positive Control: Jurkat cell lysate

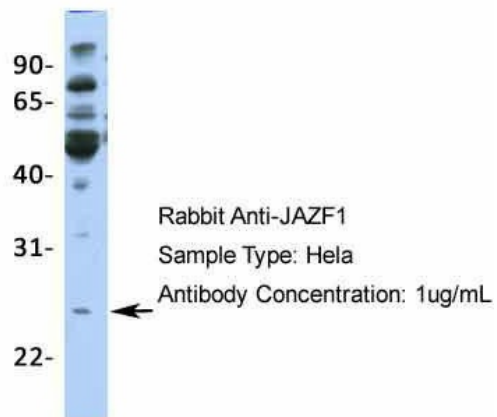
JAZF1



Rabbit Anti-JAZF1
Sample Type: Human Adult
Placenta
Antibody Concentration: 1ug/mL

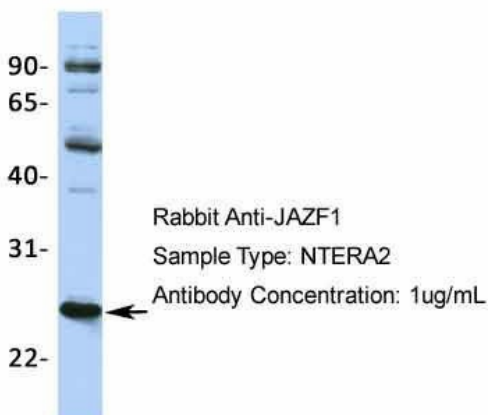
Host: Rabbit; Target Name: JAZF1; Sample Tissue: Human Adult Placenta; Antibody Dilution: 1.0 ug/ml

JAZF1



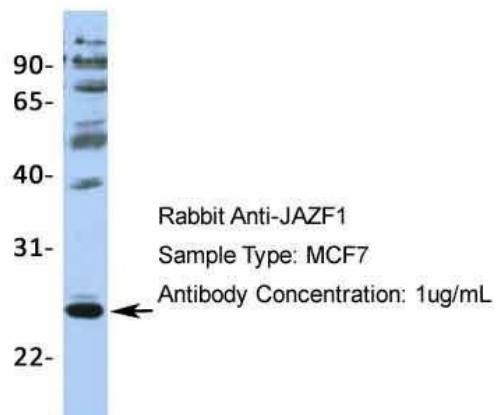
Host: Rabbit; Target Name: JAZF1; Sample Tissue: HeLa; Antibody Dilution: 1.0 µg/ml

JAZF1



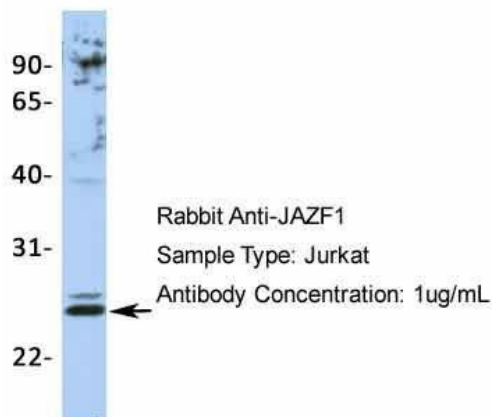
Host: Rabbit; Target Name: JAZF1; Sample Tissue: NTERA2; Antibody Dilution: 1.0 µg/ml

JAZF1



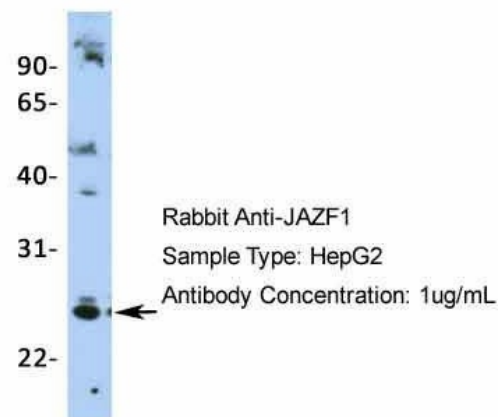
Host: Rabbit; Target Name: JAZF1; Sample Tissue: MCF7; Antibody Dilution: 1.0 µg/ml

JAZF1



Host: Rabbit; Target Name: JAZF1; Sample Tissue: Jurkat; Antibody Dilution: 1.0 µg/ml

JAZF1



Host: Rabbit; Target Name: JAZF1; Sample Tissue: HepG2; Antibody Dilution: 1.0 µg/ml