

Product datasheet for **TA341525**

Rex1 (ZFP42) Rabbit Polyclonal Antibody

Product data:

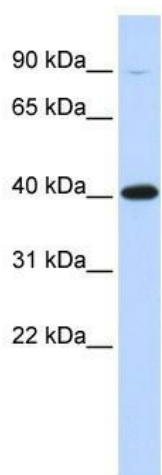
Product Type:	Primary Antibodies
Applications:	WB
Recommended Dilution:	WB
Reactivity:	Human
Host:	Rabbit
Isotype:	IgG
Clonality:	Polyclonal
Immunogen:	The immunogen for anti-ZFP42 antibody: synthetic peptide directed towards the middle region of human ZFP42. Synthetic peptide located within the following region: QKVF EASSLECSLEYMKKGVKKELPQKIVGENSLEYSEYMTGKKLPPGGI
Formulation:	Liquid. Purified antibody supplied in 1x PBS buffer with 0.09% (w/v) sodium azide and 2% sucrose. <i>Note that this product is shipped as lyophilized powder to China customers.</i>
Concentration:	lot specific
Conjugation:	Unconjugated
Storage:	Store at -20°C as received.
Stability:	Stable for 12 months from date of receipt.
Predicted Protein Size:	35 kDa
Gene Name:	ZFP42 zinc finger protein
Database Link:	NP_777560 Entrez Gene 132625 Human Q96MM3
Background:	Involved inThe reprogramming of X-chromosome inactivation duringThe acquisition of pluripotency. Required for efficient elongation of TSIX, a non-coding RNA antisense to XIST. Binds DXPas34 enhancer withinThe TSIX promoter. Involved in ES cell self-renewal.
Synonyms:	REX-1; REX1; zfp-42; ZNF754
Note:	Immunogen Sequence Homology: Human: 100%



[View online »](#)

Protein Families: Adult stem cells, Embryonic stem cells, ES Cell Differentiation/IPS, Stem cell - Pluripotency

Product images:



WB Suggested Anti-ZFP42 Antibody Titration: 0.2-1 ug/ml; ELISA Titer: 1:1562500; Positive Control: Human Lung