

## Product datasheet for **TA341524**

### Rex1 (ZFP42) Rabbit Polyclonal Antibody

#### Product data:

Product Type:	Primary Antibodies
Applications:	WB
Recommended Dilution:	WB
Reactivity:	Human
Host:	Rabbit
Isotype:	IgG
Clonality:	Polyclonal
Immunogen:	The immunogen for anti-ZFP42 antibody: synthetic peptide directed towards the N terminal of human ZFP42. Synthetic peptide located within the following region: MSQQLKKRAKTRHQKGLGGRAPSGAKPRQGKSSQDLQAEIEPVSAVWALC
Formulation:	Liquid. Purified antibody supplied in 1x PBS buffer with 0.09% (w/v) sodium azide and 2% sucrose. <i>Note that this product is shipped as lyophilized powder to China customers.</i>
Concentration:	lot specific
Conjugation:	Unconjugated
Storage:	Store at -20°C as received.
Stability:	Stable for 12 months from date of receipt.
Predicted Protein Size:	35 kDa
Gene Name:	ZFP42 zinc finger protein
Database Link:	<a href="#">NP_777560</a> <a href="#">Entrez Gene 132625 Human</a> <a href="#">Q96MM3</a>
Background:	Involved inThe reprogramming of X-chromosome inactivation duringThe acquisition of pluripotency. Required for efficient elongation of TSIX, a non-coding RNA antisense to XIST. Binds DXPas34 enhancer withinThe TSIX promoter. Involved in ES cell self-renewal.
Synonyms:	REX-1; REX1; zfp-42; ZNF754
Note:	Immunogen Sequence Homology: Human: 100%

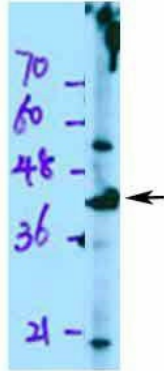


[View online »](#)

Protein Families: Adult stem cells, Embryonic stem cells, ES Cell Differentiation/IPS, Stem cell - Pluripotency

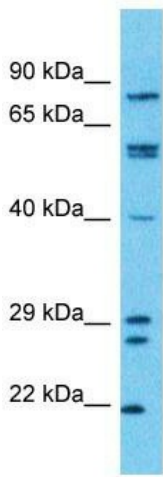
Product images:

ZFP42



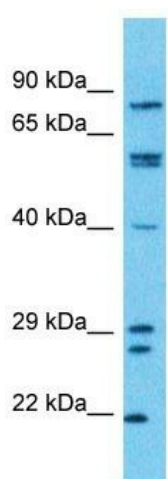
WB Suggested Anti-ZFP42 Antibody Titration: 0.2-1 ug/ml; ELISA Titer: 1:312500; Positive Control: Jurkat cell lysate

See Immunoblot 1 Data and Customer Feedback tab for more information.



Host: Rabbit  
 Target Name: ZFP42  
 Sample Tissue: 721\_B Cell Lysate  
 Antibody Dilution: 1.0µg/ml

Host: Rabbit; Target Name: ZFP42; Sample Tissue: 721\_B cell lysates; Antibody Dilution: 1.0 ug/ml



Host: Rabbit  
Target Name: ZFP42  
Sample Tissue: 721\_B Cell Lysate  
Antibody Dilution: 1.0µg/ml

Host: Rabbit; Target Name: ZFP42; Sample Tissue: 721\_B Whole cell lysates; Antibody Dilution: 1.0 ug/ml