

## Product datasheet for **TA341523**

### ZNF660 Rabbit Polyclonal Antibody

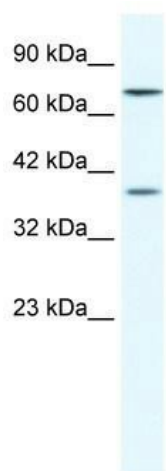
#### Product data:

Product Type:	Primary Antibodies
Applications:	IHC, WB
Recommended Dilution:	WB, IHC
Reactivity:	Human
Host:	Rabbit
Isotype:	IgG
Clonality:	Polyclonal
Immunogen:	The immunogen for anti-ZNF660 antibody: synthetic peptide directed towards the C terminal of human ZNF660. Synthetic peptide located within the following region: TFRQTSQVILHLRTHTKPKYKCSECGKAYRYSSQLIQHQRKHNEEKETS
Formulation:	Liquid. Purified antibody supplied in 1x PBS buffer with 0.09% (w/v) sodium azide and 2% sucrose.
Concentration:	lot specific
Conjugation:	Unconjugated
Storage:	Store at -20°C as received.
Stability:	Stable for 12 months from date of receipt.
Predicted Protein Size:	38 kDa
Gene Name:	zinc finger protein 660
Database Link:	<a href="#">NP_775929</a> <a href="#">Entrez Gene 285349 Human</a> <a href="#">Q6AZW8</a>
Background:	May be involved in transcriptional regulation.
Synonyms:	FLJ36870
Note:	Immunogen Sequence Homology: Horse: 100%; Human: 100%; Rat: 93%; Rabbit: 86%

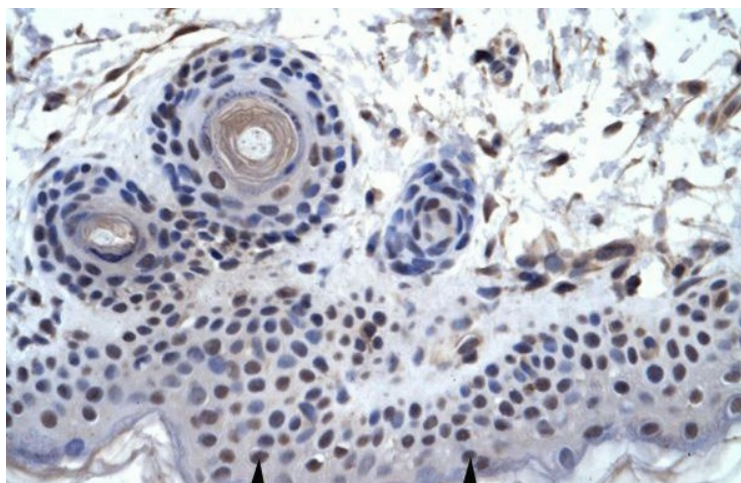


[View online »](#)

## Product images:



WB Suggested Anti-ZNF660 Antibody Titration:  
1.25 ug/ml; ELISA Titer: 1:312500; Positive  
Control: HepG2 cell lysate



Human Skin