

## Product datasheet for **TA341522**

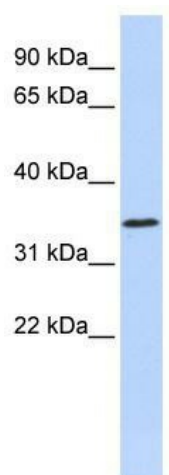
### **ZNF660 Rabbit Polyclonal Antibody**

#### **Product data:**

Product Type:	Primary Antibodies
Applications:	WB
Recommended Dilution:	WB
Reactivity:	Human
Host:	Rabbit
Isotype:	IgG
Clonality:	Polyclonal
Immunogen:	The immunogen for anti-ZNF660 antibody: synthetic peptide directed towards the N terminal of human ZNF660. Synthetic peptide located within the following region: RRKTRNFKHKTVKDNKVLTEGSDQSEKDNSQCCDPATNERVQAEKRQYV
Formulation:	Liquid. Purified antibody supplied in 1x PBS buffer with 0.09% (w/v) sodium azide and 2% sucrose.
Concentration:	lot specific
Conjugation:	Unconjugated
Storage:	Store at -20°C as received.
Stability:	Stable for 12 months from date of receipt.
Predicted Protein Size:	38 kDa
Gene Name:	zinc finger protein 660
Database Link:	<a href="#">NP_775929</a> <a href="#">Entrez Gene 285349 Human</a> <a href="#">Q6AZW8</a>
Background:	May be involved in transcriptional regulation.
Synonyms:	FLJ36870
Note:	Immunogen Sequence Homology: Human: 100%; Rabbit: 79%



[View online »](#)

**Product images:**


WB Suggested Anti-ZNF660 Antibody Titration:  
0.2-1 ug/ml; ELISA Titer: 1:62500; Positive Control:  
Hela cell lysate