

Product datasheet for **TA341520**

ZNF619 Rabbit Polyclonal Antibody

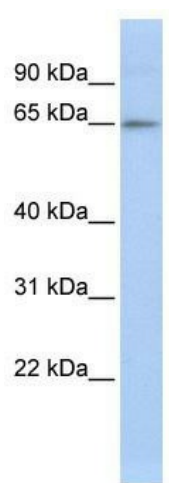
Product data:

Product Type:	Primary Antibodies
Applications:	WB
Recommended Dilution:	WB
Reactivity:	Human
Host:	Rabbit
Isotype:	IgG
Clonality:	Polyclonal
Immunogen:	The immunogen for anti-ZNF619 antibody: synthetic peptide directed towards the N terminal of human ZNF619. Synthetic peptide located within the following region: VIFTHRNLCLPGGKTKTENEKTAQLNISKESESHRLIVEGLMDVPQHP
Formulation:	Liquid. Purified antibody supplied in 1x PBS buffer with 0.09% (w/v) sodium azide and 2% sucrose.
Concentration:	lot specific
Conjugation:	Unconjugated
Storage:	Store at -20°C as received.
Stability:	Stable for 12 months from date of receipt.
Predicted Protein Size:	63 kDa
Gene Name:	zinc finger protein 619
Database Link:	NP_775927 Entrez Gene 285267 Human Q8N2I2
Background:	May be involved in transcriptional regulation.
Synonyms:	FLJ90764; OTTHUMP00000162080; zinc finger protein 619



Note: Immunogen Sequence Homology: Human: 100%

Product images:



WB Suggested Anti-ZNF619 Antibody Titration:
0.2-1 ug/ml; ELISA Titer: 1:1562500; Positive
Control: Jurkat cell lysate