

Product datasheet for **TA341519**

ZNF683 Rabbit Polyclonal Antibody

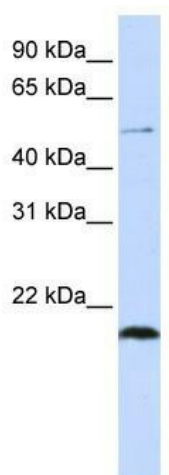
Product data:

Product Type:	Primary Antibodies
Applications:	WB
Recommended Dilution:	WB
Reactivity:	Human
Host:	Rabbit
Isotype:	IgG
Clonality:	Polyclonal
Immunogen:	The immunogen for anti-ZNF683 antibody: synthetic peptide directed towards the N terminal of human ZNF683. Synthetic peptide located within the following region: KEESAAQLGCCHRPMALGGTGGSLPSLDFQLFRGDQVFSACRPLPDMVD
Formulation:	Liquid. Purified antibody supplied in 1x PBS buffer with 0.09% (w/v) sodium azide and 2% sucrose. <i>Note that this product is shipped as lyophilized powder to China customers.</i>
Concentration:	lot specific
Conjugation:	Unconjugated
Storage:	Store at -20°C as received.
Stability:	Stable for 12 months from date of receipt.
Predicted Protein Size:	54 kDa
Gene Name:	zinc finger protein 683
Database Link:	NP_775845 Entrez Gene 257101 Human Q8IZ20
Background:	May be involved in transcriptional regulation.
Synonyms:	Hobit
Note:	Immunogen Sequence Homology: Horse: 100%; Human: 100%; Pig: 92%; Guinea pig: 92%
Protein Families:	Transcription Factors



[View online »](#)

Product images:



WB Suggested Anti-ZNF683 Antibody Titration:
0.2-1 ug/ml; ELISA Titer: 1:62500; Positive Control:
721_B cell lysate