

Product datasheet for **TA341514**

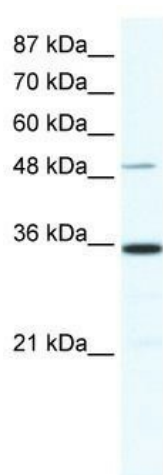
ZNF610 Rabbit Polyclonal Antibody

Product data:

Product Type:	Primary Antibodies
Applications:	WB
Recommended Dilution:	WB
Reactivity:	Human
Host:	Rabbit
Isotype:	IgG
Clonality:	Polyclonal
Immunogen:	The immunogen for anti-ZNF610 antibody: synthetic peptide directed towards the N terminal of human ZNF610. Synthetic peptide located within the following region: LSIISMLKQRREPLILQSQVKIVKNTDGRECVRSVNTGRSCVLGSNAENK
Formulation:	Liquid. Purified antibody supplied in 1x PBS buffer with 0.09% (w/v) sodium azide and 2% sucrose. <i>Note that this product is shipped as lyophilized powder to China customers.</i>
Concentration:	lot specific
Purification:	Affinity Purified
Conjugation:	Unconjugated
Storage:	Store at -20°C as received.
Stability:	Stable for 12 months from date of receipt.
Predicted Protein Size:	53 kDa
Gene Name:	zinc finger protein 610
Database Link:	NP_775801 Entrez Gene 162963 Human Q8N9Z0
Background:	May be involved in transcriptional regulation.
Synonyms:	DKFZp547A1010; FLJ36040; MGC102679
Note:	Immunogen Sequence Homology: Human: 100%
Protein Families:	Transcription Factors



[View online »](#)

Product images:

WB Suggested Anti-ZNF610 Antibody Titration:
0.2-1 ug/ml; ELISA Titer: 1:62500; Positive Control:
HepG2 cell lysate