

Product datasheet for TA341512

L3MBTL4 Rabbit Polyclonal Antibody

Product data:

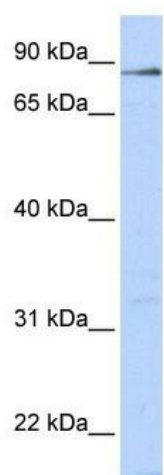
Product Type:	Primary Antibodies
Applications:	WB
Recommended Dilution:	WB
Reactivity:	Human
Host:	Rabbit
Isotype:	IgG
Clonality:	Polyclonal
Immunogen:	The immunogen for anti-L3MBTL4 antibody: synthetic peptide directed towards the N terminal of human L3MBTL4. Synthetic peptide located within the following region: STTPLSHVPSAAAQGAWSEWYLKEQKAVAAPVELFSKDQSFPEHENGFQ
Formulation:	Liquid. Purified antibody supplied in 1x PBS buffer with 0.09% (w/v) sodium azide and 2% sucrose.
Concentration:	lot specific
Conjugation:	Unconjugated
Storage:	Store at -20°C as received.
Stability:	Stable for 12 months from date of receipt.
Predicted Protein Size:	71 kDa
Gene Name:	l(3)mbt-like 4 (Drosophila)
Database Link:	NP_775735 Entrez Gene 91133 Human Q8NA19
Background:	Putative Polycomb group (PcG) protein. PcG proteins maintain the transcriptionally repressive state of genes, probably via a modification of chromatin, rendering it heritably changed in its expressibility.
Synonyms:	HsT1031
Note:	Immunogen Sequence Homology: Dog: 100%; Rat: 100%; Human: 100%; Mouse: 100%; Rabbit: 93%



[View online »](#)

Protein Families: Transcription Factors

Product images:



WB Suggested Anti-L3MBTL4 Antibody Titration:
0.2-1 ug/ml; ELISA Titer: 1:1562500; Positive
Control: 293T cell lysate