

Product datasheet for **TA341510**

MEIS2 Rabbit Polyclonal Antibody

Product data:

Product Type:	Primary Antibodies
Applications:	WB
Recommended Dilution:	WB
Reactivity:	Human
Host:	Rabbit
Isotype:	IgG
Clonality:	Polyclonal
Immunogen:	The immunogen for anti-MEIS2 antibody: synthetic peptide directed towards the N terminal of human MEIS2. Synthetic peptide located within the following region: VAGGDVCSDDSFNEDIAVFAKQVRAEKPLFSSNPELDNLMIQAIQVLRFH
Formulation:	Liquid. Purified antibody supplied in 1x PBS buffer with 0.09% (w/v) sodium azide and 2% sucrose. <i>Note that this product is shipped as lyophilized powder to China customers.</i>
Concentration:	lot specific
Conjugation:	Unconjugated
Storage:	Store at -20°C as received.
Stability:	Stable for 12 months from date of receipt.
Predicted Protein Size:	52 kDa
Gene Name:	Meis homeobox 2
Database Link:	NP_733775 Entrez Gene 4212 Human O14770
Background:	This gene encodes a homeobox protein belonging toThe TALE ('three amino acid loop extension') family of homeodomain-containing proteins. TALE homeobox proteins are highly conserved transcription regulators, and several members have been shown to be essential contributors to developmental programs. Multiple transcript variants encoding distinct isoforms have been described forThis gene. [provided by RefSeq, Jul 2008]
Synonyms:	HsT18361; MRG1

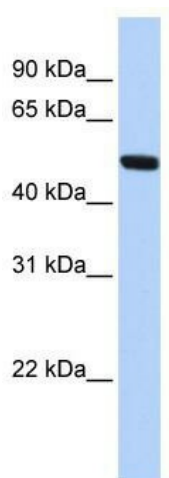


[View online »](#)

Note: Immunogen Sequence Homology: Dog: 100%; Pig: 100%; Rat: 100%; Horse: 100%; Human: 100%; Mouse: 100%; Bovine: 100%; Rabbit: 100%; Zebrafish: 100%; Guinea pig: 100%

Protein Families: Transcription Factors

Product images:



WB Suggested Anti-MEIS2 Antibody Titration: 0.2-1 ug/ml; ELISA Titer: 1:312500; Positive Control: Jurkat cell lysate