

Product datasheet for **TA341509**

ESX1 Rabbit Polyclonal Antibody

Product data:

Product Type:	Primary Antibodies
Applications:	WB
Recommended Dilution:	WB
Reactivity:	Human
Host:	Rabbit
Isotype:	IgG
Clonality:	Polyclonal
Immunogen:	The immunogen for anti-ESX1 antibody: synthetic peptide directed towards the N terminal of human ESX1. Synthetic peptide located within the following region: SLMARGGEDEENTRSKPEYGTAEENNVGTEGSVPSDDQDREGGGGHEPEQ
Formulation:	Liquid. Purified antibody supplied in 1x PBS buffer with 0.09% (w/v) sodium azide and 2% sucrose.
Concentration:	lot specific
Conjugation:	Unconjugated
Storage:	Store at -20°C as received.
Stability:	Stable for 12 months from date of receipt.
Predicted Protein Size:	44 kDa
Gene Name:	ESX homeobox 1
Database Link:	NP_703149 Entrez Gene 80712 Human Q8N693

Background: This gene encodes a dual-function 65 kDa protein that undergoes proteolytic cleavage to produce a 45 kDa N-terminal fragment with a paired-like homeodomain and a 20 kDa C-terminal fragment with a proline-rich domain. The C-terminal fragment localizes to the cytoplasm while the N-terminal fragment localizes exclusively to the nucleus. In contrast to human, the mouse homolog has a novel PN/PF motif in the C-terminus and is paternally imprinted in placental tissue. This gene likely plays a role in placental development and spermatogenesis. [provided by RefSeq, Jan 2010]



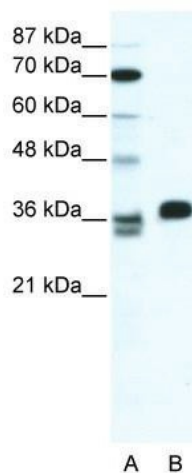
[View online »](#)

Synonyms: ESX1L; ESXR1

Note: Immunogen Sequence Homology: Human: 100%

Protein Families: Transcription Factors

Product images:



WB Suggested Anti-ESX1 Antibody Titration: 1.25 ug/ml; ELISA Titer: 1:312500; Positive Control: HepG2 cell lysate