

## Product datasheet for **TA341504**

### ZNF488 Rabbit Polyclonal Antibody

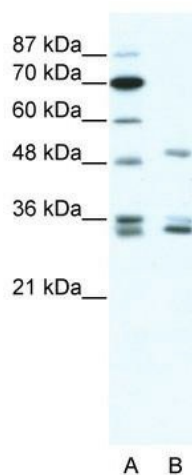
#### Product data:

Product Type:	Primary Antibodies
Applications:	WB
Recommended Dilution:	WB
Reactivity:	Human
Host:	Rabbit
Isotype:	IgG
Clonality:	Polyclonal
Immunogen:	The immunogen for anti-ZNF488 antibody: synthetic peptide directed towards the C terminal of human ZNF488. Synthetic peptide located within the following region: SDLVFHMRSHHKKEHAGPDPHSQKRREEALACPVCQEHFRERHHLSRHMT
Formulation:	Liquid. Purified antibody supplied in 1x PBS buffer with 0.09% (w/v) sodium azide and 2% sucrose. <i>Note that this product is shipped as lyophilized powder to China customers.</i>
Concentration:	lot specific
Conjugation:	Unconjugated
Storage:	Store at -20°C as received.
Stability:	Stable for 12 months from date of receipt.
Predicted Protein Size:	37 kDa
Gene Name:	zinc finger protein 488
Database Link:	<a href="#">NP_694579</a> <a href="#">Entrez Gene 118738 Human</a> <a href="#">Q96MN9</a>
Background:	May be involved in transcriptional regulation.
Synonyms:	FLJ32104
Note:	Immunogen Sequence Homology: Human: 100%; Rat: 79%; Mouse: 79%
Protein Families:	Transcription Factors



[View online »](#)

## Product images:



WB Suggested Anti-ZNF488 Antibody Titration:  
1.25 ug/ml; ELISA Titer: 1:312500; Positive  
Control: HepG2 cell lysate