

Product datasheet for **TA341501**

ZFP3 Rabbit Polyclonal Antibody

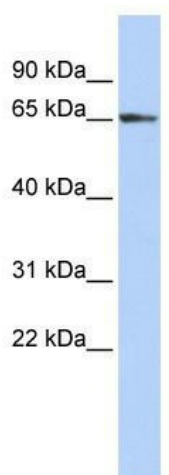
Product data:

Product Type:	Primary Antibodies
Applications:	WB
Recommended Dilution:	WB
Reactivity:	Human
Host:	Rabbit
Isotype:	IgG
Clonality:	Polyclonal
Immunogen:	The immunogen for anti-ZFP3 antibody: synthetic peptide directed towards the N terminal of human ZFP3. Synthetic peptide located within the following region: TTEGVSAFATSGQNFLILESNKTQRSSVGEKPHTCKECKGKAFNQNSHLI
Formulation:	Liquid. Purified antibody supplied in 1x PBS buffer with 0.09% (w/v) sodium azide and 2% sucrose.
Concentration:	lot specific
Conjugation:	Unconjugated
Storage:	Store at -20°C as received.
Stability:	Stable for 12 months from date of receipt.
Predicted Protein Size:	58 kDa
Gene Name:	ZFP3 zinc finger protein
Database Link:	NP_694563 Entrez Gene 124961 Human Q96NJ6
Background:	May be involved in transcriptional regulation.
Synonyms:	ZNF752
Note:	Immunogen Sequence Homology: Human: 100%; Pig: 77%; Horse: 77%; Guinea pig: 77%



[View online »](#)

Product images:



WB Suggested Anti-ZFP3 Antibody Titration: 0.2-1 ug/ml; ELISA Titer: 1:1562500; Positive Control: HepG2 cell lysate