

Product datasheet for **TA341499**

FERD3L Rabbit Polyclonal Antibody

Product data:

Product Type:	Primary Antibodies
Applications:	IHC, WB
Recommended Dilution:	WB, IHC
Reactivity:	Human
Host:	Rabbit
Isotype:	IgG
Clonality:	Polyclonal
Immunogen:	The immunogen for anti-FERD3L antibody: synthetic peptide directed towards the N terminal of human FERD3L. Synthetic peptide located within the following region: SCVDTTVLDFVADLSLASPRRPLLCDFAPGVSLGDPALALREGRPRRMAR
Formulation:	Liquid. Purified antibody supplied in 1x PBS buffer with 0.09% (w/v) sodium azide and 2% sucrose. <i>Note that this product is shipped as lyophilized powder to China customers.</i>
Concentration:	lot specific
Conjugation:	Unconjugated
Storage:	Store at -20°C as received.
Stability:	Stable for 12 months from date of receipt.
Predicted Protein Size:	19 kDa
Gene Name:	Fer3-like bHLH transcription factor
Database Link:	NP_690862 Entrez Gene 222894 Human Q96R16
Background:	Transcription factor that binds toThe E-box and functions as inhibitor of transcription. DNA binding requires dimerization with an E protein. Inhibits transcription activation by ASCL1/MASH1 by sequestering E proteins.
Synonyms:	bHLHa31; N-TWIST; NATO3; NTWIST
Note:	Immunogen Sequence Homology: Human: 100%

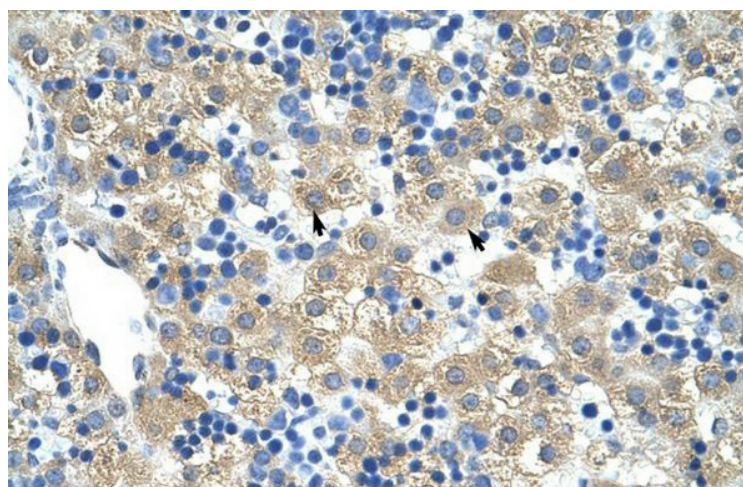


[View online »](#)

Product images:



WB Suggested Anti-FERD3L Antibody Titration:
1.0 ug/ml; ELISA Titer: 1:62500; Positive Control:
Jurkat cell lysate



Human Liver