

## Product datasheet for **TA341495**

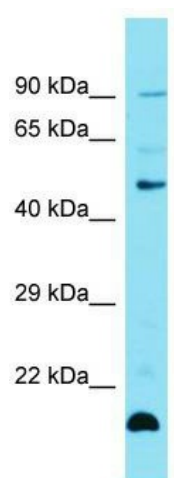
### Zfp27 Rabbit Polyclonal Antibody

#### Product data:

Product Type:	Primary Antibodies
Applications:	WB
Recommended Dilution:	WB
Reactivity:	Mouse
Host:	Rabbit
Isotype:	IgG
Clonality:	Polyclonal
Immunogen:	The immunogen for Anti-Zfp27 antibody is: synthetic peptide directed towards the middle region of Mouse Zfp27. Synthetic peptide located within the following region: HRRHTGEKLYDCSHCGKGFSYNSDLRIHQKIHTGEKRHGCVDCGKAFTQ
Formulation:	Liquid. Purified antibody supplied in 1x PBS buffer with 0.09% (w/v) sodium azide and 2% sucrose.
Concentration:	lot specific
Conjugation:	Unconjugated
Storage:	Store at -20°C as received.
Stability:	Stable for 12 months from date of receipt.
Predicted Protein Size:	93 kDa
Gene Name:	zinc finger protein 27
Database Link:	<a href="#">NP_001032796</a> <a href="#">Entrez Gene 22689 Mouse</a> <a href="#">P10077</a>
Background:	May be involved in transcriptional regulation.
Synonyms:	mkr-4; mszf76; Zfp-27
Note:	Immunogen Sequence Homology: Human: 100%; Pig: 93%; Bovine: 93%; Rat: 86%; Mouse: 86%; Rabbit: 86%



[View online »](#)

**Product images:**

Host: Rabbit; Target Name: Zfp27; Sample Tissue: Mouse Thymus lysates; Antibody Dilution: 1.0 ug/ml