

Product datasheet for **TA341493**

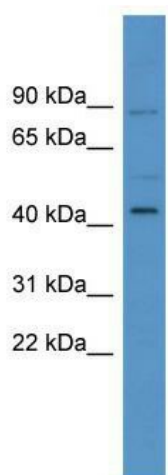
ZNF540 Rabbit Polyclonal Antibody

Product data:

Product Type:	Primary Antibodies
Applications:	WB
Recommended Dilution:	WB
Reactivity:	Human
Host:	Rabbit
Isotype:	IgG
Clonality:	Polyclonal
Immunogen:	The immunogen for anti-ZNF540 antibody: synthetic peptide directed towards the N terminal of human ZNF540. Synthetic peptide located within the following region: SLSKESIIKSKTLRLKGSIFRNEWQNKSEFEGQQGLKERSISQKKIVSK
Formulation:	Liquid. Purified antibody supplied in 1x PBS buffer with 0.09% (w/v) sodium azide and 2% sucrose. <i>Note that this product is shipped as lyophilized powder to China customers.</i>
Concentration:	lot specific
Conjugation:	Unconjugated
Storage:	Store at -20°C as received.
Stability:	Stable for 12 months from date of receipt.
Predicted Protein Size:	77 kDa
Gene Name:	zinc finger protein 540
Database Link:	NP_689819 Entrez Gene 163255 Human Q8NDQ6
Background:	ZNF540 belongs to the krueppel C2H2-type zinc-finger protein family. It contains 17 C2H2-type zinc fingers and 1 KRAB domain. ZNF540 may be involved in transcriptional regulation.
Synonyms:	Nbla10512
Note:	Immunogen Sequence Homology: Human: 100%
Protein Families:	Transcription Factors



[View online »](#)

Product images:

WB Suggested Anti-ZNF540 Antibody Titration:
0.2-1 ug/ml; ELISA Titer: 1:1562500; Positive
Control: HT1080 cell lysate