

Product datasheet for **TA341488**

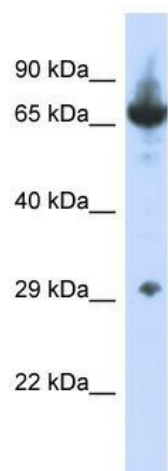
CCDC17 Rabbit Polyclonal Antibody

Product data:

Product Type:	Primary Antibodies
Applications:	WB
Recommended Dilution:	WB
Reactivity:	Human
Host:	Rabbit
Isotype:	IgG
Clonality:	Polyclonal
Immunogen:	The immunogen for Anti-CCDC17 antibody is: synthetic peptide directed towards the N-terminal region of Human CCDC17. Synthetic peptide located within the following region: ARIQELQAEPGNPLSSRREAELYSPVQKANPGTLAAEIRALREAYIRDGG
Formulation:	Liquid. Purified antibody supplied in 1x PBS buffer with 0.09% (w/v) sodium azide and 2% sucrose.
Concentration:	lot specific
Conjugation:	Unconjugated
Storage:	Store at -20°C as received.
Stability:	Stable for 12 months from date of receipt.
Predicted Protein Size:	67 kDa
Gene Name:	coiled-coil domain containing 17
Database Link:	NP_001177111 Entrez Gene 149483 Human Q96LX7
Background:	The function of this protein remains unknown.
Synonyms:	RP4-697E16.4
Note:	Immunogen Sequence Homology: Human: 100%



[View online »](#)

Product images:

Host: Rabbit; Target Name: CCDC17; Sample
Tissue: HepG2 Whole cell lysates; Antibody
Dilution: 1.0 ug/ml