

Product datasheet for **TA341485**

ZNF417 Rabbit Polyclonal Antibody

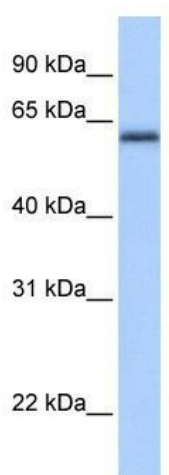
Product data:

| | |
|-------------------------|--|
| Product Type: | Primary Antibodies |
| Applications: | WB |
| Recommended Dilution: | WB |
| Reactivity: | Human |
| Host: | Rabbit |
| Isotype: | IgG |
| Clonality: | Polyclonal |
| Immunogen: | The immunogen for anti-ZNF417 antibody: synthetic peptide directed towards the N terminal of human ZNF417. Synthetic peptide located within the following region: SVREASFVKKRKLRSVQEPFVFREFGKDVLPSSGLCQEAAAVEKTDSETM |
| Formulation: | Liquid. Purified antibody supplied in 1x PBS buffer with 0.09% (w/v) sodium azide and 2% sucrose. <i>Note that this product is shipped as lyophilized powder to China customers.</i> |
| Concentration: | lot specific |
| Conjugation: | Unconjugated |
| Storage: | Store at -20°C as received. |
| Stability: | Stable for 12 months from date of receipt. |
| Predicted Protein Size: | 66 kDa |
| Gene Name: | zinc finger protein 417 |
| Database Link: | NP_689688 Entrez Gene 147687 Human Q8TAU3 |
| Background: | May be involved in transcriptional regulation. |
| Synonyms: | MGC34079 |
| Note: | Immunogen Sequence Homology: Human: 93%; Yeast: 77% |
| Protein Families: | Transcription Factors |



[View online »](#)

Product images:



WB Suggested Anti-ZNF417 Antibody Titration:
0.2-1 ug/ml; ELISA Titer: 1:1562500; Positive
Control: Human brain