

Product datasheet for **TA341480**

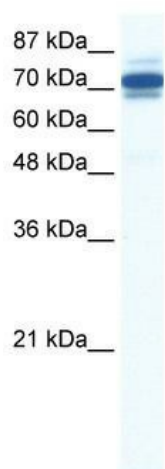
ZNF690 (ZSCAN29) Rabbit Polyclonal Antibody

Product data:

Product Type:	Primary Antibodies
Applications:	WB
Recommended Dilution:	WB
Reactivity:	Human
Host:	Rabbit
Isotype:	IgG
Clonality:	Polyclonal
Immunogen:	The immunogen for anti-ZNF690 antibody: synthetic peptide directed towards the middle region of human ZNF690. Synthetic peptide located within the following region: APVLFQSPRGFEAGFENEDNSKRDISEEVQLHRTLARSERKIPRYLHQG
Formulation:	Liquid. Purified antibody supplied in 1x PBS buffer with 0.09% (w/v) sodium azide and 2% sucrose. <i>Note that this product is shipped as lyophilized powder to China customers.</i>
Concentration:	lot specific
Conjugation:	Unconjugated
Storage:	Store at -20°C as received.
Stability:	Stable for 12 months from date of receipt.
Predicted Protein Size:	97 kDa
Gene Name:	zinc finger and SCAN domain containing 29
Database Link:	NP_689668 Entrez Gene 146050 Human Q8IWY8
Background:	May be involved in transcriptional regulation.
Synonyms:	Zfp690; ZNF690
Note:	Immunogen Sequence Homology: Human: 100%; Mouse: 92%; Horse: 91%; Bovine: 91%; Rabbit: 91%; Pig: 85%; Dog: 82%; Rat: 77%



[View online »](#)

Product images:

WB Suggested Anti-ZNF690 Antibody Titration:
0.2-1 ug/ml; ELISA Titer: 1:312500; Positive
Control: HepG2 cell lysate